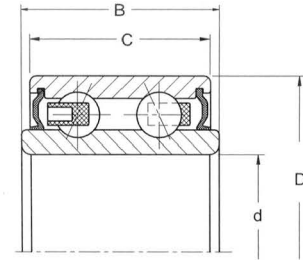
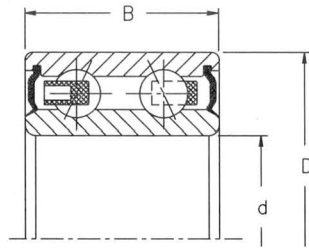


AUTOMOTIVE BEARINGS



AIR COMPRESSOR AND MAGNETIC CLUTCH BEARINGS



NACHI No.	NSK No.	KOYO No.	Boundary dimensions (mm)				APPLICATION
			d	D	B	C	
30BG04S8G-2DS		83A693	30	47	18		SUZUKI, DAIHATSU
		83A693A	30	47	21	18	TOYOTA
30BG05S2G-2DS		DAC3052-32R	30	52	22		FORD, TOYOTA, HONDA
5006-2NSL	30BD40DF		30	55	23		FORD
30BGS1-2NSL			30	62	27		
32BG05S1-2DST			32	55	23		MAZDA
35BG05S7G-2DST			35	50	20		mitsubishi
	35BD5222DFX7		35	52	22		
35BG05S10G-2DST2	35BD219DUK		35	55	20		GM, HONDA, NISSAN
	35BD210DDU	BD30-11A	35	62	27.7		CHRYSLER, WHITE
38BG05S2G-2DS			38	54	17		SUZUKI, DAIHATSU
40BG05S2G-2DS	40BD45T12DDU		40	57	24		MITSUBISHI
40BG05S1G-2DS			40	57	24	20	EUROPE
6557684/6559496	40BD49V	83A5518	40	62	20.6		GM (907257)
40BGS12G-2DS	40BD49AWT12DDU		40	62	24	20.6	FORD, CHRYSLER, TOYOTA
BGS11G-2DS	40BD219T12DDU	83A551B4	40	62	24		FORD, CHRYSLER

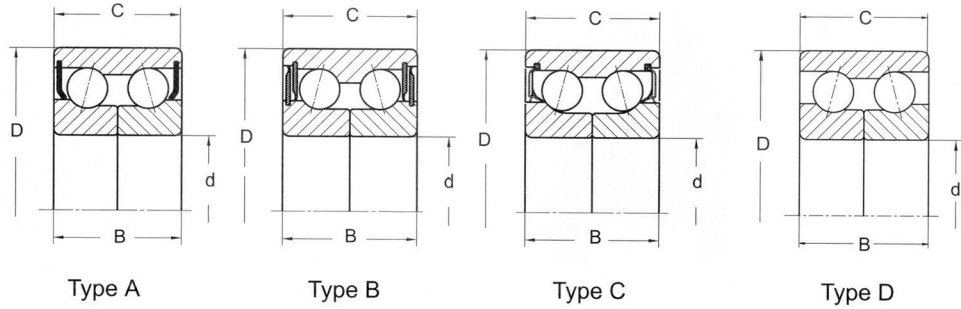


AUTOMOTIVE

AUTOMOTIVE BEARINGS



DOUBLE ROW ANGULAR CONTACT BALL BEARINGS Two Inner Rings



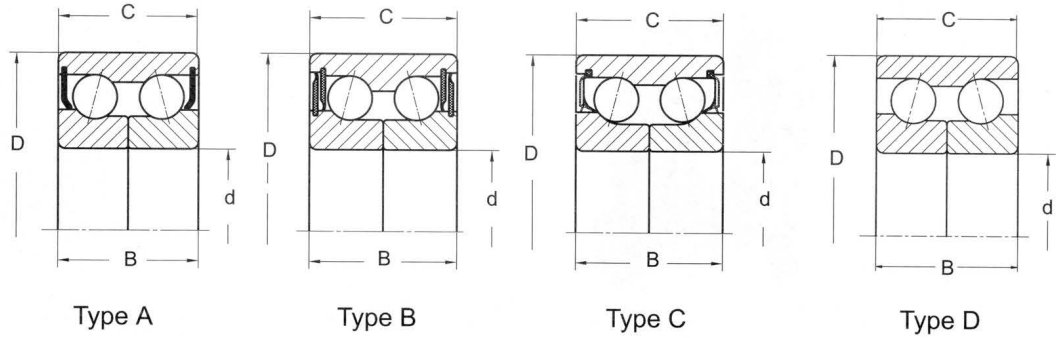
Boundary dimensions (mm)				Type	Mass (kg)	Bearing No.			
d	D	B	C			SKF	FAG	KOYO	OTHER COMPANY
25	52.00	20.60	20.60	A	0.19	617546A			
25	52.00	37.00	37.00	C	0.31	445539	566030		566030/NTN DE0678CS12 DE0681CS18
30	50.00	20.00	20.00	D					
30	54.00	24.00	24.00	D					
30	60.03	37.00	37.00	C	0.42	633313C	529890AB	DAC3060372RS	
30	64.00	42.00	42.00	A	0.55			DAC3064	
34	62.00	37.00	37.00	C	0.41	311316B 309724B	531910 561447		
34	64.00	37.00	37.00	B	0.43	309726	540466B 532066DE	DAC3464G1	
34	66.00	37.00	37.00	C	0.50			DAC346637	B35
35	64.00	37.00	37.00	B	0.41			DAC3564A-1	
35	65.00	35.00	35.00	C	0.40	445620B 443952	546238A		
35	66.00	33.00	33.00	C	0.43	633676			
35	66.00	37.00	37.00	C	0.48	311309	546238 544307		
35	68.00	37.00	37.00	C	0.52	633295 633528 633967	567918B 541153A		B33
35	72.00	33.00	33.00	C	0.58	446762 445535	548083		
35	72.04	33.00	33.00	C	0.58	633669			
35	72.00	34.00	34.00	A	0.60			DAC357234A	B36 B32 DE0769
36	72.04	34.00	34.00	D	0.58				
37	72.04	37.00	37.00	C	0.59	633028	562398		
37	72.00	37.00	37.00	C	0.59	633541B	562398A		
37	74.00	45.00	45.00	B		309946AC			
38	70.00	38.00	38.00	B	0.55			DAC3870BW	
38	72.02	36.00	33.00	D	0.56			DAC3872W-3	510007 DE0871
38	72.04	40.00	40.00	A					
38	74.02	36.00	33.00	D	0.60			DAC3874W	
38	74.04	50.00	50.00	B	0.85	559192			510008 B38
39	68.00	37.00	37.00	B	0.48	311315DB 309692	540733 528810		
39	68.06	37.00	37.00	B	0.48	311315BD			
39	72.00	37.00	37.00	B	0.56	311396(B) 309639	542186A	DAC3972AW4	
39	72.06	37.00	37.00	B	0.56		542186CA		



AUTOMOTIVE BEARINGS



DOUBLE ROW ANGULAR CONTACT BALL BEARINGS Two Inner Rings



Boundary dimensions (mm)				Type	Mass (kg)	Bearing No.			
d	D	B	C			SKF	FAG	KOYO	OTHER COMPANY
40	72.00	37.0	37.0	C	0.55	311443B	566719B		
40	72.07	37.0	37.0	C	0.55				510004
40	74.00	36.0	34.0	D	0.58			DAC4074BW	
40	74.05	40.0	40.0	A					DE08A27
40	75.00	37.0	37.0	C	0.62	633966E			
39/41	75.00	37.0	37.0	C	0.62	633815A	567447B		
40	76.00	33.0	28.0	A	0.54	474743F	539166AB		B39
40	76.04	41.0	38.0	A					DE0891
40	80.00	36.0	34.0	D	0.74			DAC4080M1	
40	80.00	30.2	30.2	D		440320H	523854 565636		
42	75.00	37.0	37.0	C	0.59	633457 311424	521771 533953		
						3092445	545495D		
42	75.07	37.0	37.0	C		633791			
42	76.00	40.0	37.0	A	0.64	909042	547059A		513006(B96)
42	80.00	45.0	45.0	C	0.85			DAC428045BW	
42	80.03	42.0	42.0	C	0.81	309609AD		DAC4282B-2RS	
42	82.00	36.0	36.0	C	0.77	446047	561481		
42	82.00	37.0	37.0	C	0.79	311413A	565636		
42	84.00	36.0	36.0	A		444090	564727		
42	84.02	36.0	36.0	A		444090AB			
43/45	82.00	37.0	37.0	C	0.76	633814A	567519A		

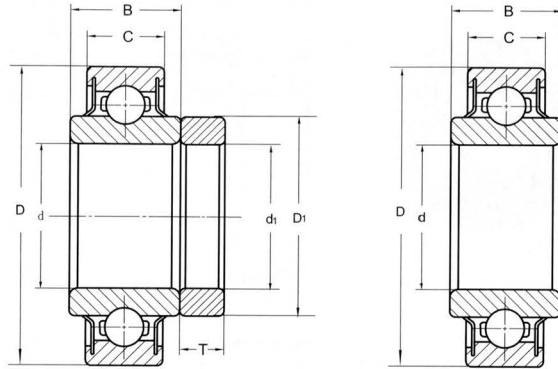


AUTOMOTIVE

AUTOMOTIVE BEARINGS



REAR WHEEL BEARINGS Deep Groove Ball Bearings



Bearing with locking ring

Boundary dimensions (mm)				Locking ring dimensions (mm)			Mass (kg)		Bearing No.
d	D	B	C	d1	D1	T	Bearing	Ring	
15	35	14.4	11				0.12		88502
17	40	16.6	12				0.16		88503
25	52	16.8	15				0.20		88505
30	62	24	16				0.26		88506
35	72	25	17				0.35		88507
40	72	22	17				0.32		88508A
40	80	27	21				0.45		88508
45	85	27	21				0.50		88509
50	90	30	22				0.55		88510
55	100	31	23				0.76		88511
60	110	36	22				0.97		88512
35	72	25	17				0.35		88107
35	72	25	17	34.92	41.45	7.80	0.35	0.05	88107R
38.894	80	27.5	21				0.48		88128
38.894	80	27.5	21	38.77	54.00	9.86	0.48	0.09	88128R
38.894	80	27.5	21	38.77	58.00	16.45	0.48	0.16	88128RA
35	72	21.46	-	34.93	50.00	10.00	0.35	0.08	RW207CCR
35	69.789	17.78	16.7	34.93	50.00	15.40	0.30	0.10	RW507CR
34	68	24	21	33.92	47.70	8.60	0.26	0.065	RWF34R
36.373	73.05	23.62	17.7	36.29	50.50	9.65	0.36	0.07	RWC35YYR



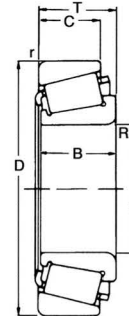
AUTOMOTIVE

ROLLER BEARINGS



TAPERED ROLLER BEARINGS

Metric Size



Boundary dimensions (mm)							Basic load rating N		Limiting speeds RPM		Mass (kg)	Bearing No.
d	D	T	B	C	R _{min}	r _{min}	dynamic C _r	static C _{0r}	Grease	oil		
15	42	14.25	13	11	1	1	21 200	12 700	9 900	13 000	0.098	30302
17	40	13.25	12	11	1	1	17 900	11 000	9 900	13 000	0.080	30203
	47	15.25	14	12	1	1	33 000	21 200	9 000	12 000	0.134	30303
20	42	15	15	12	0.6	0.6	22 900	15 600	9 500	13 000	0.097	32004X
	47	15.25	14	12	1	1	26 000	16 600	8 800	12 000	0.127	30204
	52	16.25	15	13	1.5	1.5	31 900	20 000	8 000	11 000	0.169	30304
	52	22.25	21	18	1.5	1.5	41 300	28 000	8 000	11 000	0.245	32304
22	44	15	15	11.5	0.6	0.6	23 800	16 600	8 900	12 000	0.106	320/22X
25	47	15	15	11.5	0.6	0.6	25 500	18 300	7 900	11 000	0.114	32005X
	52	16.25	15	13	1	1	29 200	19 300	7 300	9 800	0.154	30205
	52	19.25	18	16	1	1	34 100	25 000	7 300	9 800	0.187	32205
	52	22	22	18	1	1	44 000	32 500	7 300	9 800	0.217	33205
	62	18.25	17	15	1.5	1.5	41 800	26 500	6 700	8 900	0.272	30305
	62	18.25	17	13	1.5	1.5	35 800	23 200	5 900	7 800	0.284	31305
	62	25.25	24	20	1.5	1.5	56 100	39 000	6 700	8 900	0.381	32305
28	52	16	16	12	1	1	29 700	21 600	7 300	9 700	0.146	320/28X
30	55	17	17	13	1	1	33 600	24 500	6 900	9 200	0.166	32006X
	62	17.25	16	14	1	1	38 000	25 500	6 300	8 400	0.241	20206
	62	21.25	20	17	1	1	47 300	33 500	6 300	8 400	0.301	32206
	62	25	25	19.5	1	1	60 500	45 500	6 300	8 400	0.344	33206
	72	20.75	19	16	1.5	1.5	52 800	34 500	5 700	7 600	0.408	30306
	72	20.75	19	14	1.5	1.5	44 600	29 000	5 000	6 700	0.398	31306
72	28.75	27	23	1.5	1.5	72 100	52 000	5 700	7 600	0.583	32306	
32	58	17	17	13	1	1	34 700	26 000	6 600	8 700	0.181	320/32X
35	62	18	18	14	1	1	40 200	30 500	6 100	8 100	0.224	32007X
	72	18.25	17	15	1.5	1.5	48 400	32 500	5 500	7 400	0.344	30207
	72	24.25	23	19	1.5	1.5	61 600	45 000	5 500	7 400	0.457	32207
	72	28	28	22	1.5	1.5	79 200	62 000	5 500	7 400	0.530	33207
	80	22.75	21	18	2	1.5	68 200	45 000	5 000	6 600	0.520	30307
	80	22.75	21	15	2	1.5	57 200	39 000	4 400	5 800	0.530	31307
	80	32.75	31	25	2	1.5	89 700	65 500	5 000	6 600	0.787	32307
40	68	19	19	14.5	1	1	44 500	40 000	5 300	7 100	0.278	32008X
	68	22	22	18	1	1	56 000	44 700	5 300	7 100	0.312	33008
	75	26	26	20.5	1.5	1.5	74 800	58 500	5 200	6 900	0.494	33108
	80	19.75	18	16	1.5	1.5	58 300	40 000	4 900	6 600	0.435	30208
	80	24.75	23	19	1.5	1.5	70 400	50 000	4 900	6 600	0.558	32208
	80	32	32	25	1.5	1.5	96 800	78 000	4 900	6 600	0.728	33208
	90	25.25	23	20	2	1.5	80 900	56 000	4 400	5 900	0.769	30308
	90	25.25	23	17	2	1.5	69 300	46 500	3 900	5 200	0.738	31308
	90	35.25	32	27	2	1.5	110 000	83 000	4 400	5 900	1.080	32308

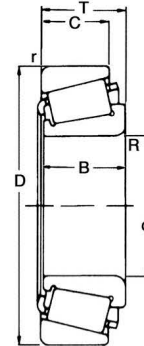


ROLLER BEARINGS



TAPERED ROLLER BEARINGS

Metric Size



Boundary dimensions (mm)							Basic load rating N		Limiting speeds RPM		Mass (kg)	Bearing No.
d	D	T	B	C	R _{min}	r _{min}	dynamic C _r	static C _{0r}	Grease	oil		
45	75	20	20	15.5	1	1	55 000	44 000	4 800	6 400	0.346	32009X
	75	24	24	19	1	1	62 600	50 000	4 800	6 400		33009
	80	26	26	20.5	1.5	1.5	79 200	64 000	4 700	6 200		33209
	85	20.75	19	16	1.5	1.5	62 700	44 000	4 400	5 900	0.495	30209
	85	24.75	23	19	1.5	1.5	74 800	56 000	4 400	5 900	0.607	32209
	85	32	32	25	1.5	1.5	101 000	81 500	4 400	5 900	0.783	33209
	100	27.25	25	22	2	1.5	101 000	72 000	4 000	5 300	1.010	30309
	100	27.25	25	18	2	1.5	85 800	60 000	3 500	4 600	0.958	31309
100	38.25	36	30	2	1.5	132 000	102 000	4 000	5 300	1.460	32309	
50	72	15	15	12	0.6	0.6	35 500		4 700	6 300	0.191	32910
	80	20	20	15.5	1	1	57 200	48 000	4 400	5 800	0.366	32010X
	80	24	24	19	1	1	64 000	56 000	4 400	5 800	0.433	33010
	85	26	26	20	1.5	1.5	80 900	67 000	4 200	5 600	0.580	33110
	90	21.75	20	17	1.5	1.5	70 400	52 000	4 000	5 300	0.563	30210
	90	24.75	23	19	1.5	1.5	70 400	52 000	4 000	5 300	0.648	32210
	90	32	32	24.5	1.5	1.5	76 500	57 000	4 000	5 300	0.852	33210
	110	29.25	27	23	2.5	2	117 000	83 000	3 600	4 800	1.310	30310
110	29.25	27	19	2.5	2	99 000	69 500	3 200	4 200	1.250	31310	
110	42.25	40	33	2.5	2	161 000	127 000	3 600	4 800	1.920	32310	
55	80	17	17	14	1	1	44 500	35 600	4 300	5 700	0.274	32911
	90	23	23	17.5	1.5	1.5	76 500	64 000	4 000	5 400	0.563	32011X
	90	27	27	21	1.5	1.5	84 200	75 000	4 000	5 400	0.643	33011
	95	30	30	23	1.5	1.5	105 000	86 500	3 900	5 200	0.846	33111
	100	22.75	21	18	2	1.5	84 200	61 000	3 600	4 900	0.740	30211
	100	26.75	25	21	2	1.5	99 000	75 000	3 600	4 900	0.876	32211
	100	36	35	27	2	1.5	130 000	10 800	3 600	4 900	1.150	33211
	120	31.5	29	21	2.5	2	134 000	96 500	3 300	4 400	1.660	30311
	120	31.5	29	21	2.5	2	114 000	80 000	2 900	3 800	1.590	31311
	120	45.5	43	35	2.5	2	187 000	15 0000	3 300	4 400	2.440	32311
60	85	17	17	14	1	1	46 000	36 800	4 000	5 300	0.294	32912
	95	23	23	17.5	1.5	1.5	76 500	67 000	3 700	4 900	0.576	32012X
	95	27	27	21	1.5	1.5	85 800	78 000	3 700	4 900	0.684	33012
	100	30	30	23	1.5	1.5	110 000	95 000	3 600	4 700	0.912	33112
	110	23.75	22	19	2	1.5	91 300	65 500	3 400	4 500	0.949	30212
	110	29.75	28	24	2	1.5	119 000	91 500	3 400	4 500	1.180	32212
	110	38	38	29	2	1.5	157 000	134 000	3 400	4 500	1.550	33212
	130	33.5	31	26	3	2.5	161 000	116 000	3 000	4 000	2.060	30312
	130	33.5	31	22	3	2.5	134 000	96 500	2 700	3 600	1.970	31312
	130	48.5	46	37	3	2.5	216 000	17 3000	3 000	4 000	3.020	32312
	65	90	17	17	14	1	1	48 500	38 800	3 700	4 900	0.315
100		23	23	17.5	1.5	1.5	78 100	68 000	3 400	4 600	0.630	32013X
100		27	27	21	1.5	1.5	91 300	83 000	3 400	4 600	0.732	33013
110		31	34	26.5	1.5	1.5	134 000	116 000	3 300	4 400	1.280	33113
120		24.75	23	20	2	1.5	108 000	78 000	3 100	4 200	1.180	30213
120		32.75	31	27	2	1.5	142 000	112 000	3 100	4 200	1.580	32213
120		41	41	32	2	1.5	168 000	153 000	3 100	4 200	1.980	33213
140		36	33	28	3	2.5	183 000	134 000	2 800	3 700	2.550	30313
140		36	33	23	3	2.5	154 000	112 000	2 500	3 300	2.420	31313
140		51	48	39	3	2.5	246 000	200 000	2 800	3 700	3.660	32313



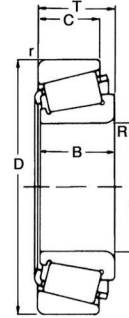
ROLLER BEARINGS

ROLLER BEARINGS



TAPERED ROLLER BEARINGS

Metric Size



Boundary dimensions (mm)							Basic load rating N		Limiting speeds RPM		Mass (kg)	Bearing No.
d	D	T	B	C	R _{min}	r _{min}	dynamic Cr	static Cor	Grease	oil		
70	100	20	20	16	1	1	68 500	59 000	3 400	4 600	0.487	32914
	110	25	25	19	1.5	1.5	95 200	83 000	3 200	4 200	0.848	32014X
	110	31	31	25.5	1.5	1.5	121 000	108 000	3 200	4 200	1.070	33014
	125	26.25	24	21	2	1.5	119 000	88 000	2 900	3 900	1.260	30214
	125	33.25	31	27	2	1.5	147 000	118 000	2 900	3 900	1.680	32214
	125	41	41	32	2	1.5	190 000	163 000	2 900	3 900	2.100	33214
	150	38	35	30	3	2.5	209 000	153 000	2 600	3 500	3.060	30314
	150	38	35	25	3	2.5	176 000	127 000	2 300	3 000	2.920	31314
	150	54	51	42	3	2.5	275 000	228 000	2 600	3 500	4.460	32314
75	105	20	20	16	1	1	69 500	59 000	3 200	4 300	0.511	32915
	115	25	25	19	1.5	1.5	99 000	88 000	3 000	4 000	0.909	32015X
	115	31	31	25.5	1.5	1.5	128 000	122 000	3 000	4 000	1.130	33015
	130	27.25	25	22	2	1.5	130 000	100 000	2 700	3 600	1.410	30215
	130	33.25	31	27	2	1.5	151 000	120 000	2 700	3 600	1.740	32215
	130	41	41	31	2	1.5	194 000	170 000	2 700	3 600	2.200	33215
	160	40	37	31	3	2.5	229 000	173 000	2 400	3 200	3.570	30315
	160	40	37	26	3	2.5	194 000	143 000	2 100	2 800	3.470	31315
	160	58	55	45	3	2.5	319 000	260 000	2 400	3 200	5.350	32315
80	110	20	20	16	1	1	72 000	41 200	3 000	4 000	0.540	32916
	125	29	29	22	1.5	1.5	128 000	116 000	2 800	3 700	1.280	32016X
	130	37	37	29	2	1.5	168 000	153 000	2 600	3 600	1.900	33016
	140	28.25	26	22	2.5	2	140 000	104 000	2 500	3 400	1.720	30216
	140	35.25	33	28	2.5	2	176 000	137 000	2 500	3 400	2.180	32216
	140	46	46	35	2.5	2	233 000	208 000	2 500	3 400	2.920	33216
	170	42.5	39	33	3	2.5	255 000	190 000	2 300	3 000	4.410	30316
	170	42.5	39	27	3	2.5	212 000	153 000	2 000	2 700	4.110	31316
	170	61.5	58	48	3	2.5	358 000	300 000	2 300	3 000	6.410	32316
85	120	23	23	18	1.5	1.5	94 000	80 000	2 800	3 800	0.773	32917
	130	29	29	22	1.5	1.5	130 000	120 000	2 600	3 500	1.350	32017X
	130	36	36	29.5	1.5	1.5	172 000	166 000	2 600	3 500	1.700	33017
	150	30.5	28	24	2.5	2	165 000	125 000	2 400	3 200	2.140	30217
	150	38.5	36	30	2.5	2	201 000	163 000	2 400	3 200	2.750	32217
	150	49	49	37	2.5	2	270 000	240 000	2 400	3 200	3.580	33217
	180	44.5	41	34	4	3	286 000	216 000	2 100	2 900	5.200	30317
	180	44.5	41	28	4	3	229 000	166 000	1 900	2 500	4.850	31317
	180	63.5	60	49	4	3	380 000	320 000	2 100	2 900	7.150	32317
90	125	23	23	18	1.5	1.5	97 500	83 000	2 700	3 600	0.817	32918
	140	32	32	24	2	1.5	157 000	146 000	2 500	3 300	1.790	32018X
	150	45	45	35	2.5	2	238 000	220 000	2 000	3 000	3.150	33118
	160	32.5	30	26	2.5	2	183 000	140 000	2 200	3 000	2.660	30218
	160	42.5	40	34	2.5	2	238 000	193 000	2 200	3 000	3.490	32218
	190	46.5	43	36	4	3	308 000	236 000	2 000	2 700	6.030	30318
	190	67.5	64	53	4	3	429 000	360 000	2 000	2 700	8.570	32318

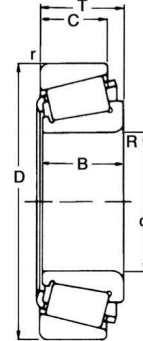


ROLLER BEARINGS



TAPERED ROLLER BEARINGS

Metric Size



ROLLER BEARINGS

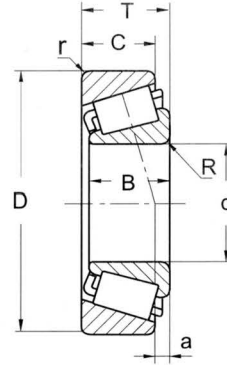
Boundary dimensions (mm)							Basic load rating N		Limiting speeds RPM		Mass (kg)	Bearing No.
d	D	T	B	C	R _{min}	r _{min}	dynamic C _r	static C _{or}	Grease	oil		
95	130	23	23	18	1.5	1.5	101 000	86 000	2 500	3 400	0.881	32919
	145	32	32	24	2	1.5	157 000	146 000	2 300	3 100	1.830	32019X
	145	39	39	32.5	2	1.5	209 000	200 000	2 300	3 100	2.270	33019
	170	34.5	32	27	3	2.5	205 000	156 000	2 100	2 800	3.070	30219
	170	45.5	43	37	3	2.5	264 000	220 000	2 100	2 800	4.300	32219
	200	49.5	45	38	4	3	341 000	265 000	1 900	2 500	6.980	30319
	200	71.5	67	55	4	3	468 000	400 000	1 900	2 500	10.10	32319
100	140	25	25	20	1.5	1.5	121 000	103 000	2 400	3 200	1.140	32920
	150	32	32	24	2	1.5	161 000	150 000	2 200	3 000	1.910	32020X
	150	39	39	32.5	2	1.5	212 000	208 000	2 200	3 000	2.370	33020
	180	37	34	29	3	2.5	233 000	183 000	2 000	2 700	3.780	30220
	180	49	46	39	3	2.5	297 000	250 000	2 000	2 700	5.120	32220
	215	51.5	47	39	4	3	380 000	290 000	1 800	2 400	8.560	30320
	215	77.5	73	60	4	3	539 000	465 000	1 800	2 400	12.70	32320
105	145	25	25	20	1.5	1.5	126 000	107 000	2 300	3 000	1.200	32921
	160	35	35	26	2.5	2	190 000	180 000	2 100	2 800	2.420	32021X
	160	43	43	34	2.5	2	233 000	232 000	2 100	2 800	3.000	33021
	190	39	36	30	3	2.5	255 000	200 000	1 900	2 500	4.390	30221
	190	53	50	43	3	2.5	341 000	290 000	1 900	2 500	6.250	32221
	225	53.5	49	41	4	3	402 000	315 000	1 700	2 300	9.790	30321
	225	81.5	77	63	4	3	561 000	480 000	1 700	2 300	14.50	32321
110	150	25	25	20	1.5	1.5	127 000	108 000	2 200	2 900	1.240	32922
	170	38	38	29	2.5	2	220 000	208 000	2 000	2 700	3.070	32022X
	170	47	47	37	2.5	2	264 000	270 000	2 000	2 700	3.800	33022
	200	41	38	32	3	2.5	286 000	228 000	1 800	2 400	5.180	30222
	200	56	53	46	3	2.5	374 000	325 000	1 800	2 400	7.430	32222
	240	54.5	50	42	4	3	446 000	345 000	1 600	2 200	11.40	30322
	240	84.5	80	65	4	3	660 000	570 000	1 600	2 200	18.00	32322
120	165	29	29	23	1.5	1.5	162 000	138 000	2 000	2 600	1.770	32924
	180	38	38	29	2.5	2	229 000	224 000	1 800	2 500	3.250	32024X
	215	43.5	40	34	3	2.5	319 000	260 000	1 700	2 200	6.230	30224
	215	61.5	58	50	3	2.5	440 000	390 000	1 700	2 200	9.080	32224
	260	59.5	55	46	4	3	528 000	415 000	1 500	2 000	14.20	30324
	260	90.5	86	69	4	3	748 000	655 000	1 500	2 000	22.40	32324
130	180	32	32	25	2	1.5	194 000	165 000	1 800	2 400	2.360	32926
	200	45	45	34	2.5	2	297 000	290 000	1 700	2 200	4.960	32026X
	230	43.75	40	34	4	3	347 000	280 000	1 500	2 000	7.250	30226
	230	67.75	64	54	4	3	523 000	475 000	1 500	2 000	11.20	32226
	280	63.75	58	49	5	4	594 000	475 000	1 400	1 800	17.40	30326
140	190	32	32	25	2	1.5	200 000	170 000	1 700	2 200	2.510	32928
	210	45	45	34	2.5	2	308 000	311 000	1 600	2 100	5.280	32028X

ROLLER BEARINGS



TAPERED ROLLER BEARINGS

Inch Size



Assembly No.		Boundary dimensions (mm)							Load center (mm) a	Mass (kg)	Bearing No.	
		d	D	T	B	C	Rmin	rmin			Cone	Cup
A1	SET1	17.462	39.878	13.843	14.605	10.688	1.3	1.3	5.3	0.083	LM11749	LM11710
A2	SET2	19.050	45.237	15.494	16.637	12.065	1.3	1.3	5.6	0.124	LM11949	LM11910
A3	SET3	21.430	50.005	17.526	18.288	13.970	1.3	1.3	6.4	0.169	M12649	M12610
A4	SET4	26.988	50.292	14.244	14.732	10.688	3.5	1.3	3.4	0.115	L44649	L44610
A5	SET5	34.925	65.088	18.034	18.288	13.970	Spec	1.3	3.7	0.248	LM48548	LM48510
A6	SET6	31.750	59.131	15.875	16.764	11.811	Spec	1.3	2.8	0.180	LM67048	LM67010
A7	SET7	39.688	73.025	25.654	22.098	21.336	0.8	2.3	5.9	0.435	M201047	M201011
A12	SET12	21.986	45.237	15.494	16.637	12.065	1.3	1.3	5.4	0.123	LM12749	LM12710
A13	SET13	34.988	59.131	15.875	16.764	11.938	Spec	1.3	2.5	0.167	L 68149	L68110
A14	SET14	25.400	50.292	14.224	14.732	10.668	1.3	1.3	3.4	0.130	L 44643	L44610
A15	SET8	29.000	50.292	14.224	14.732	10.668	3.5	1.3	3.5	0.110	L 45449	L45410
A16	SET16	21.986	45.974	15.494	16.637	12.065	1.3	1.3	5.4	0.121	LM12749	LM12711
A17	SET17	34.988	59.974	15.875	16.764	11.938	Spec	1.3	2.5	0.174	L 68149	L 68111
A18	SET11	38.000	63.000	17.000	17.000	13.500	Spec	1.3	2.3	0.194	JL69349	JL69310
A19	-	25.400	50.005	13.495	14.250	9.525	1.0	1.0	3.0	0.115	07100	07196
A21	SET21	28.575	57.150	19.845	19.355	15.875	3.5	1.5	5.9	0.213	1988	1922
A22	SET25	55.000	90.000	23.000	26.000	18.500	3.5	0.5	2.8	0.576	JLM506848E(2)	JLM506810(2)
A23	SET23	50.800	82.550	51.765	51.765	41.605	3.5	1.3	5.8	1.100	LM104949E(2)	LM104910(2)
A29	SET22	31.750	59.131	15.875	18.570	11.811	Spec	1.3	2.8	0.180	LM67045	LM67010
A31	SET24	35.000	60.000	15.875	18.460	11.990	2.0	1.3	2.5	0.183	JL68145	JL68111Z
A32	-	28.000	52.000	16.000	16.000	12.000	1.0	1.0	4.0	0.146	320 / 28X	320 / 28X
A33	-	32.000	58.000	17.000	17.000	13.000	3.3	1.5	3.0	0.181	320 / 32DX	320 / 32DX
A34	SET34	21.430	45.237	15.494	16.637	12.065	1.3	1.3	5.4	0.121	LM12748	LM12710
A35	SET45	41.275	73.431	19.588	19.812	14.732	3.5	0.8	3.3	0.327	LM501349	LM501310
A36	SET36	45.242	77.788	21.430	19.842	16.667	3.5	0.8	2.2	0.381	LM603049	LM603012
A37	SET37	45.242	77.788	19.842	19.842	15.080	3.5	0.8	2.2	0.363	LM603049	LM603011
A38	SET38	50.800	82.550	21.590	22.225	16.510	3.5	1.3	5.8	0.419	LM104949	LM104911
A39	SET46	32.000	53.000	14.500	15.000	11.500	3.5	1.3	-	0.120	JL26749	JL26710
A40	SET26	50.000	82.000	21.500	21.500	17.000	3.0	0.5	5.8	0.440	JLM104946	JLM104910Z
A41	SET42	38.100	65.088	18.034	21.139	13.970	Spec	1.3	4.3	0.240	57410S	LM29710S
A42	-	55.000	90.000	23.000	23.000	18.500	1.5	0.5	2.8	0.576	JLM506849A	JLM506811
A80	SET47	45.242	73.431	19.588	19.812	15.748	3.5	0.8	4.7	0.303	LM102949	LM102910
A81	SET56	38.100	65.088	18.034	18.288	13.970	Spec	1.3	4.3	0.233	LM29748	LM29710
	SET9	35.000	65.000	18.100	20.600	17.000	2.3	1.3	0.380	U298	U261L	
	SET10	39.688	73.025	19.395	22.100	18.500	2.3	1.3	0.500	U399	U360L	
	SET20	39.688	79.967	19.395	22.100	20.100	2.3	1.3	0.740	U399A	U365L	
		26.000	52.000	15.000	14.260	12.700	3.2	2.0	0.139	CBK - 171		
		19.050	39.992	12.014	11.153	9.525	1.0	1.3	0.067	A6075	A6157	
		32.000	58.000	17.000	17.000	13.000	3.5	1.0	0.182	320 / 32C		
		25.000	47.000	15.000	15.000	11.500	2.5	1.0		32005X / VB015		
		38.000	63.000	17.000	19.000	13.500	Spec	1.3	0.198	JL69345	JL69310Z	

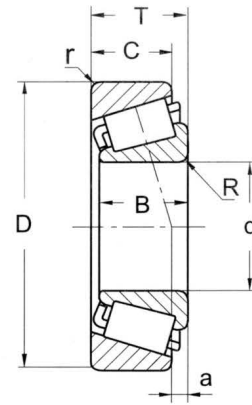


ROLLER BEARINGS



TAPERED ROLLER BEARINGS

Inch Size



ROLLER
BEARINGS

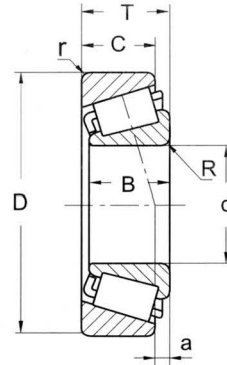
Assembly No	Boundary dimensions (mm)							Mass (kg)	Bearing No.	
	d	D	T	B	C	Rmin	rmin		Cone	Cup
SET30	28.000	57.150	17.462	17.462	13.495	3.5	1.5	0.270	JLM67042	LM67010
SET44	25.400	50.292	14.244	14.732	10.668	1.3	1.3	0.210	L44600LB-90005	L44610
SET50	28.575	73.025	22.225	22.225	17.462	0.8	3.3	0.480	02872	02820
SET51	26.988	62.000	19.050	20.638	14.288	1.3	0.8	0.291	15106	15245
SET52	44.450	82.931	23.812	25.400	19.050	3.5	0.8	0.561	25580	25520
SET53	44.450	82.931	26.988	25.400	22.225	3.5	2.3	0.603	25580	25523
SET54	45.618	82.931	23.812	25.400	19.050	3.5	0.8	0.544	25590	25520
SET55	45.618	82.931	26.988	25.400	22.225	3.5	2.3	0.588	25590	25523
SET57	34.920	76.200	29.370	28.575	23.812	3.3	1.5	0.627	31594	31520
SET58	34.925	65.088	18.034	18.288	13.970	1.3	0.8	0.252	LM48548A	LM48510
SET59	34.925	65.088	21.082	18.288	17.016	0.8	1.5	0.280	LM48548A	LM48511A
SET60	34.925	65.088	21.082	18.288	17.018	Spec	1.5	0.290	LM48548	LM48511A
SET61	15.875	42.862	14.288	14.288	9.525	1.5	1.5	0.100	11590	11520
SET62	45.230	79.985	19.842	20.638	15.080	2.0	1.3	0.400	17887	17831
SET63	33.338	68.262	22.225	22.225	17.462	0.8	1.5	0.379	M88048	M88010
SET64	44.450	95.250	30.958	28.575	22.225	3.5	0.8	1.000	HM903249	HM903210
SET65	28.575	64.292	21.433	21.433	16.670	1.5	1.5	0.348	M86647	M86610
SET66	51.592	90.000	20.638	22.225	16.513	2.0	2.0	0.507	368S	362
SET67	34.925	72.233	25.400	25.400	19.842	2.3	2.3	0.489	HM88649	HM88610
SET68	85.725	136.525	30.162	28.789	22.225	3.5	3.3	1.550	497	493
SET69	41.275	73.431	21.430	19.812	16.604	3.5	0.8	0.350	LM501349	LM501314

ROLLER BEARINGS



TAPERED ROLLER BEARINGS

Inch Size



Assembly No.	Boundary dimensions (mm)							Mass (kg)	Bearing No.	
	d	D	T	B	C	Rmin	rmin		Cone	Cup
SET70	38.100	65.088	18.034	18.288	13.970	2.3	1.3	0.235	LM29749	LM29710
SET73	25.400	62.000	19.050	20.638	14.288	3.5	1.3	0.300	15101	15245
SET74	57.150	96.838	21.000	21.946	15.875	3.5	0.8	0.581	387A	382A
SET75	57.150	96.838	25.400	21.946	20.274	3.5	2.3	0.650	387A	382S
SET76	57.150	96.838	21.000	21.946	15.875	5.0	0.8	0.576	387AS	382A
SET77	57.531	98.425	21.000	21.946	17.826	3.5	0.8	0.610	388A	382
SET78	50.800	111.125	30.162	26.909	20.638	3.5	3.3	1.080	55200C	55437
SET79	107.950	165.100	36.512	36.512	26.988	3.5	3.3	2.690	56425	56650
SET81	31.750	73.025	29.370	27.783	23.020	3.3	1.3	0.622	HM88542	HM88510
SET82	50.800	82.000	21.500	22.225	17.000	3.5	0.5	0.429	LM104949	JLM104910
SET83	44.450	88.900	30.162	29.370	23.020	3.5	3.3	0.849	HM803149	HM803110
SET84	44.450	104.775	36.512	36.512	28.575	3.5	3.3	1.620	HM807040	HM807010
SET85	36.487	73.025	23.812	24.608	19.050	1.5	2.3	0.559	25880	25820
SET401	82.550	139.992	36.512	36.098	28.575	3.5	3.3	2.220	580	572
SET403	95.250	152.400	39.688	36.322	30.162	5.0	3.3	2.510	594A	592A
SET404	92.075	152.400	39.688	36.322	30.162	6.4	3.3	2.630	598A	592A
SET405	82.550	146.050	41.275	41.275	31.750	3.5	3.3	2.740	663	653
SET406	44.450	93.264	30.162	30.302	23.812	3.5	3.3	0.961	3782	3720
SET407	57.150	97.630	24.608	24.608	19.446	3.5	0.8	0.747	28682	28622
SET408	66.675	112.712	30.162	30.162	23.812	3.5	3.3	1.180	39590	39520
SET410	50.800	104.775	30.162	30.958	23.812	6.4	3.3	1.220	45284	45220
SET411	82.550	133.350	33.338	33.338	26.195	3.5	3.3	1.720	47686	47620
SET412	63.500	122.238	38.100	38.354	29.718	7.0	3.3	1.940	HM212047	HM212011
SET413	66.675	122.238	38.100	38.354	29.718	3.5	3.3	1.850	HM212049	HM212011
SET414	89.975	146.975	40.000	40.000	32.500	7.0	3.5	2.520	HM218248	HM218210
SET415	88.900	152.400	39.688	39.688	30.163	3.5	3.3	2.840	HM518445	HM518410
SET416	57.150	104.775	30.162	30.958	23.812	6.4	3.3	1.090	45291	45220
SET417	92.075	146.050	33.338	34.925	26.195	3.5	3.3	2.080	47890	47820
SET418	61.912	136.525	46.038	46.038	36.512	3.5	3.3	3.470	H715334	H715311
SET419	68.262	136.525	46.038	46.038	36.512	3.5	3.3	3.240	H715343	H715311

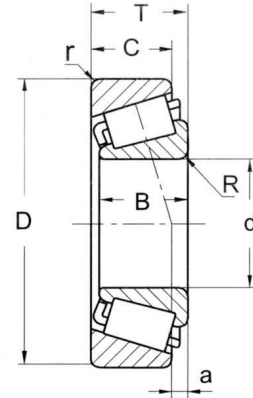


ROLLER BEARINGS



TAPERED ROLLER BEARINGS

Inch Size



Boundary dimensions (mm)							Mass (kg)	Bearing No.	
d	D	T	B	C	Rmin	rmin		Cone	Cup
50.800	88.900	20.638	22.225	16.513	3.5	1.3	0.516	368A	362A
57.150	96.838	21.000	21.946	15.875	3.5	0.8	0.581	387A	382A
57.150	96.838	21.000	21.946	15.875	5.0	0.8	0.576	387AS	382S
63.500	110.000	22.000	21.996	18.824	3.5	1.3	0.847	395	394A
38.100	88.500	26.988	29.083	22.225	3.5	1.5	0.841	418	414
38.100	76.200	23.812	25.654	19.050	3.5	3.3	0.402	2788	2720
34.925	80.167	29.370	30.391	23.812	3.5	3.3	0.732	3379	3320
50.800	93.264	30.162	30.302	23.812	3.5	3.3	0.848	3780	3720
34.925	85.725	30.162	30.162	23.812	3.5	3.3	0.897	3872	3820
63.500	112.712	30.162	30.048	23.812	3.5	3.3	1.200	3982	3920
66.675	112.712	30.162	30.048	23.812	3.5	3.3	1.180	3984	3920
41.275	90.488	39.688	40.386	33.338	3.5	3.3	1.220	4388	4335
19.050	39.992	12.014	11.153	9.525	1.0	1.3	0.065	A6075	A6175
28.575	73.025	22.225	22.225	17.462	0.8	3.3	0.480	02872	02820
23.812	50.005	13.495	14.260	9.525	1.5	1.0	0.123	07093	07196
25.400	50.005	13.495	14.260	9.525	1.0	1.0	0.117	07100	07196
19.050	49.225	18.034	19.050	14.288	1.3	1.3	0.179	09067	09195
15.875	42.862	14.288	14.288	9.525	1.5	1.5	0.103	11590	11520
31.750	69.012	19.845	19.583	15.875	3.5	1.3	0.360	14125A	14276
26.162	61.912	19.050	19.939	14.288	0.8	2.0	0.280	15103S	15243
31.750	62.000	18.161	19.050	14.288	Spec	1.3	0.244	15123	15245
45.230	79.985	19.842	20.638	15.080	2.0	1.3	-	17887	17831
41.275	73.025	16.667	17.462	12.700	3.5	1.5	0.281	18590	18520
50.800	85.000	17.462	17.462	13.495	3.5	1.5	0.374	18790	18720
41.275	76.200	22.225	23.020	17.462	3.5	0.8	0.432	24780	24720
44.450	82.931	23.812	25.400	19.050	3.5	0.8	0.561	25580	25520
45.618	82.931	23.812	25.400	19.050	3.5	0.8	0.544	25590	25520
45.618	82.931	26.988	25.400	22.225	3.5	2.3	0.603	25590	25523
34.925	73.025	23.812	24.608	19.050	1.5	0.8	0.471	25877	25821
82.550	125.412	25.400	25.400	19.845	3.5	1.5	1.070	27687	27620
52.388	92.075	24.608	25.400	19.845	3.5	0.8	0.677	28584	28521
41.275	79.375	23.812	25.400	19.050	3.5	0.8	0.530	26882	26822
60.325	101.600	25.400	25.400	19.845	3.5	3.3	0.811	28985	28920

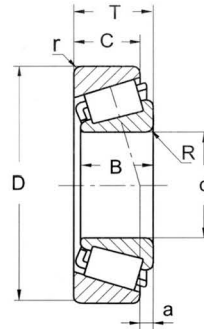


ROLLER BEARINGS



TAPERED ROLLER BEARINGS

Inch Size



Boundary dimensions (mm)							Mass (kg)	Bearing No.	
d	D	T	B	C	Rmin	rmin		Cone	Cup
66.675	107.950	25.400	25.400	19.050	3.5	3.3	0.860	29590	29520
69.850	117.475	30.162	30.162	23.812	3.5	3.3	1.280	33275	33462
57.150	112.712	30.162	30.162	23.812	8.0	3.3	1.380	39581	39520
66.675	112.712	30.162	30.162	23.812	3.5	3.3	1.190	39590	39520
76.200	127.000	30.162	31.000	22.225	3.5	3.3	1.460	42687	42620
35.000	62.000	16.700	17.000	13.599	Spec	1.5	0.222	LM78349	LM78310A
25.400	59.530	23.368	23.114	18.288	0.8	1.5	0.330	M84249	M84210
30.162	64.292	21.433	21.433	16.670	1.5	1.5	0.336	M86649	M86610
33.338	68.262	22.225	22.225	17.462	0.8	1.5	0.379	M88048	M88010
34.925	72.233	25.400	25.400	19.842	2.3	2.3	0.485	HM88649	HM88610
45.242	73.431	19.588	19.812	15.748	3.5	0.8	0.307	LM102949	LM102910
50.000	82.000	21.500	21.500	17.000	3.0	0.5	0.420	JLM104948	JLM104910
50.000	90.000	28.000	28.000	23.000	3.0	2.5	0.752	JM205149	JM205110
55.000	95.000	29.000	29.000	23.500	1.5	2.5	0.820	JM207049	JM207010
40.988	67.975	17.500	18.000	13.500	Spec	1.5	0.234	LM300849	LM300811
41.275	88.900	30.162	29.370	23.020	0.8	3.3	0.892	HM803145	HM803110
41.275	88.900	30.162	29.370	23.020	3.5	3.3	0.892	HM803146	HM803110

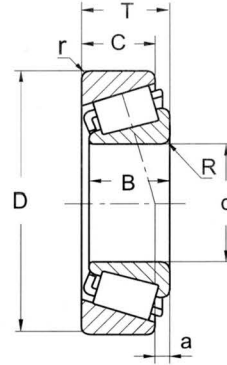


AUTOMOTIVE BEARINGS



FRONT AND REAR WHEEL BEARINGS

Tapered Roller Bearing
Inch Size



Assembly No.		Boundary dimensions (mm)							Load center (mm) a	Mass (kg)	Bearing No.	
		d	D	T	B	C	Rmin	rmin			Cone	Cup
A1	SET1	17.462	39.878	13.843	14.605	10.688	1.3	1.3	5.3	0.083	LM11749	LM11710
A2	SET2	19.050	45.237	15.494	16.637	12.065	1.3	1.3	5.6	0.124	LM11949	LM11910
A3	SET3	21.430	50.005	17.526	18.288	13.970	1.3	1.3	6.4	0.169	M12649	M12610
A4	SET4	26.988	50.292	14.244	14.732	10.688	3.5	1.3	3.4	0.115	L44649	L44610
A5	SET5	34.925	65.088	18.034	18.288	13.970	Spec	1.3	3.7	0.248	LM48548	LM48510
A6	SET6	31.750	59.131	15.875	16.764	11.811	Spec	1.3	2.8	0.180	LM67048	LM67010
A7	SET7	39.688	73.025	25.654	22.098	21.336	0.8	2.3	5.9	0.435	M201047	M201011
A12	SET12	21.986	45.237	15.494	16.637	12.065	1.3	1.3	5.4	0.123	LM12749	LM12710
A13	SET13	34.988	59.131	15.875	16.764	11.938	Spec	1.3	2.5	0.167	L 68149	L68110
A14	SET14	25.400	50.292	14.224	14.732	10.668	1.3	1.3	3.4	0.130	L 44643	L44610
A15	SET8	29.000	50.292	14.224	14.732	10.668	3.5	1.3	3.5	0.110	L 45449	L45410
A16	SET16	21.986	45.974	15.494	16.637	12.065	1.3	1.3	5.4	0.121	LM12749	LM12711
A17	SET17	34.988	59.974	15.875	16.764	11.938	Spec	1.3	2.5	0.174	L 68149	L 68111
A18	SET11	38.000	63.000	17.000	17.000	13.500	Spec	1.3	2.3	0.194	JL69349	JL69310
A19	-	25.400	50.005	13.495	14.250	9.525	1.0	1.0	3.0	0.115	07100	07196
A21	SET21	28.575	57.150	19.845	19.355	15.875	3.5	1.5	5.9	0.213	1988	1922
A22	SET25	55.000	90.000	23.000	26.000	18.500	3.5	0.5	2.8	0.576	JLM506848E(2)	JLM506810(2)
A23	SET23	50.800	82.550	51.765	51.765	41.605	3.5	1.3	5.8	1.100	LM104949E(2)	LM104910(2)
A29	SET22	31.750	59.131	15.875	18.570	11.811	Spec	1.3	2.8	0.180	LM67045	LM67010
A31	SET24	35.000	60.000	15.875	18.460	11.990	2.0	1.3	2.5	0.183	JL68145	JL68111Z
A32	-	28.000	52.000	16.000	16.000	12.000	1.0	1.0	4.0	0.146	320 / 28X	320 / 28X
A33	-	32.000	58.000	17.000	17.000	13.000	3.3	1.5	3.0	0.181	320 / 32DX	320 / 32DX
A34	SET34	21.430	45.237	15.494	16.637	12.065	1.3	1.3	5.4	0.121	LM12748	LM12710
A35	SET45	41.275	73.431	19.588	19.812	14.732	3.5	0.8	3.3	0.327	LM501349	LM501310
A36	SET36	45.242	77.788	21.430	19.842	16.667	3.5	0.8	2.2	0.381	LM603049	LM603012
A37	SET37	45.242	77.788	19.842	19.842	15.080	3.5	0.8	2.2	0.363	LM603049	LM603011
A38	SET38	50.800	82.550	21.590	22.225	16.510	3.5	1.3	5.8	0.419	LM104949	LM104911
A39	SET46	32.000	53.000	14.500	15.000	11.500	3.5	1.3	-	0.120	JL26749	JL26710
A40	SET26	50.000	82.000	21.500	21.500	17.000	3.0	0.5	5.8	0.440	JLM104946	JLM104910Z
A41	SET42	38.100	65.088	18.034	21.139	13.970	Spec	1.3	4.3	0.240	57410S	LM29710S
A42	-	55.000	90.000	23.000	23.000	18.500	1.5	0.5	2.8	0.576	JLM506849A	JLM506811
A80	SET47	45.242	73.431	19.588	19.812	15.748	3.5	0.8	4.7	0.303	LM102949	LM102910
A81	SET56	38.100	65.088	18.034	18.288	13.970	Spec	1.3	4.3	0.233	LM29748	LM29710
	SET9	35.000	65.000	18.100	20.600	17.000	2.3	1.3	0.380	U298	U261L	
	SET10	39.688	73.025	19.395	22.100	18.500	2.3	1.3	0.500	U399	U360L	
	SET20	39.688	79.967	19.395	22.100	20.100	2.3	1.3	0.740	U399A	U365L	
		26.000	52.000	15.000	14.260	12.700	3.2	2.0	0.139	CBK - 171		
		19.050	39.992	12.014	11.153	9.525	1.0	1.3	0.067	A6075	A6157	
		32.000	58.000	17.000	17.000	13.000	3.5	1.0	0.182	320 / 32C		
		25.000	47.000	15.000	15.000	11.500	2.5	1.0		32005X / VB015		
		38.000	63.000	17.000	19.000	13.500	Spec	1.3	0.198	JL69345	JL69310Z	

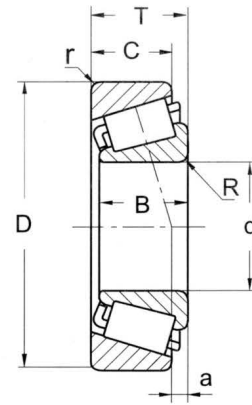


AUTOMOTIVE BEARINGS



FRONT AND REAR WHEEL BEARINGS

Tapered Roller Bearing
Inch Size



Assembly No	Boundary dimensions (mm)							Mass (kg)	Bearing No.	
	d	D	T	B	C	Rmin	rmin		Cone	Cup
SET30	28.000	57.150	17.462	17.462	13.495	3.5	1.5	0.270	JLM67042	LM67010
SET44	25.400	50.292	14.244	14.732	10.668	1.3	1.3	0.210	L44600LB-90005	L44610
SET50	28.575	73.025	22.225	22.225	17.462	0.8	3.3	0.480	02872	02820
SET51	26.988	62.000	19.050	20.638	14.288	1.3	0.8	0.291	15106	15245
SET52	44.450	82.931	23.812	25.400	19.050	3.5	0.8	0.561	25580	25520
SET53	44.450	82.931	26.988	25.400	22.225	3.5	2.3	0.603	25580	25523
SET54	45.618	82.931	23.812	25.400	19.050	3.5	0.8	0.544	25590	25520
SET55	45.618	82.931	26.988	25.400	22.225	3.5	2.3	0.588	25590	25523
SET57	34.920	76.200	29.370	28.575	23.812	3.3	1.5	0.627	31594	31520
SET58	34.925	65.088	18.034	18.288	13.970	1.3	0.8	0.252	LM48548A	LM48510
SET59	34.925	65.088	21.082	18.288	17.016	0.8	1.5	0.280	LM48548A	LM48511A
SET60	34.925	65.088	21.082	18.288	17.018	Spec	1.5	0.290	LM48548	LM48511A
SET61	15.875	42.862	14.288	14.288	9.525	1.5	1.5	0.100	11590	11520
SET62	45.230	79.985	19.842	20.638	15.080	2.0	1.3	0.400	17887	17831
SET63	33.338	68.262	22.225	22.225	17.462	0.8	1.5	0.379	M88048	M88010
SET64	44.450	95.250	30.958	28.575	22.225	3.5	0.8	1.000	HM903249	HM903210
SET65	28.575	64.292	21.433	21.433	16.670	1.5	1.5	0.348	M86647	M86610
SET66	51.592	90.000	20.638	22.225	16.513	2.0	2.0	0.507	368S	362
SET67	34.925	72.233	25.400	25.400	19.842	2.3	2.3	0.489	HM88649	HM88610
SET68	85.725	136.525	30.162	28.789	22.225	3.5	3.3	1.550	497	493
SET69	41.275	73.431	21.430	19.812	16.604	3.5	0.8	0.350	LM501349	LM501314

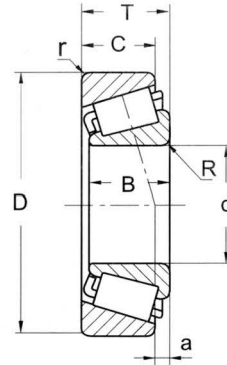
AUTOMOTIVE

AUTOMOTIVE BEARINGS



FRONT AND REAR WHEEL BEARINGS

Tapered Roller Bearing
Inch Size



Assembly No.	Boundary dimensions (mm)							Mass (kg)	Bearing No.	
	d	D	T	B	C	Rmin	rmin		Cone	Cup
SET70	38.100	65.088	18.034	18.288	13.970	2.3	1.3	0.235	LM29749	LM29710
SET73	25.400	62.000	19.050	20.638	14.288	3.5	1.3	0.300	15101	15245
SET74	57.150	96.838	21.000	21.946	15.875	3.5	0.8	0.581	387A	382A
SET75	57.150	96.838	25.400	21.946	20.274	3.5	2.3	0.650	387A	382S
SET76	57.150	96.838	21.000	21.946	15.875	5.0	0.8	0.576	387AS	382A
SET77	57.531	98.425	21.000	21.946	17.826	3.5	0.8	0.610	388A	382
SET78	50.800	111.125	30.162	26.909	20.638	3.5	3.3	1.080	55200C	55437
SET79	107.950	165.100	36.512	36.512	26.988	3.5	3.3	2.690	56425	56650
SET81	31.750	73.025	29.370	27.783	23.020	3.3	1.3	0.622	HM88542	HM88510
SET82	50.800	82.000	21.500	22.225	17.000	3.5	0.5	0.429	LM104949	JLM104910
SET83	44.450	88.900	30.162	29.370	23.020	3.5	3.3	0.849	HM803149	HM803110
SET84	44.450	104.775	36.512	36.512	28.575	3.5	3.3	1.620	HM807040	HM807010
SET85	36.487	73.025	23.812	24.608	19.050	1.5	2.3	0.559	25880	25820
SET401	82.550	139.992	36.512	36.098	28.575	3.5	3.3	2.220	580	572
SET403	95.250	152.400	39.688	36.322	30.162	5.0	3.3	2.510	594A	592A
SET404	92.075	152.400	39.688	36.322	30.162	6.4	3.3	2.630	598A	592A
SET405	82.550	146.050	41.275	41.275	31.750	3.5	3.3	2.740	663	653
SET406	44.450	93.264	30.162	30.302	23.812	3.5	3.3	0.961	3782	3720
SET407	57.150	97.630	24.608	24.608	19.446	3.5	0.8	0.747	28682	28622
SET408	66.675	112.712	30.162	30.162	23.812	3.5	3.3	1.180	39590	39520
SET410	50.800	104.775	30.162	30.958	23.812	6.4	3.3	1.220	45284	45220
SET411	82.550	133.350	33.338	33.338	26.195	3.5	3.3	1.720	47686	47620
SET412	63.500	122.238	38.100	38.354	29.718	7.0	3.3	1.940	HM212047	HM212011
SET413	66.675	122.238	38.100	38.354	29.718	3.5	3.3	1.850	HM212049	HM212011
SET414	89.975	146.975	40.000	40.000	32.500	7.0	3.5	2.520	HM218248	HM218210
SET415	88.900	152.400	39.688	39.688	30.163	3.5	3.3	2.840	HM518445	HM518410
SET416	57.150	104.775	30.162	30.958	23.812	6.4	3.3	1.090	45291	45220
SET417	92.075	146.050	33.338	34.925	26.195	3.5	3.3	2.080	47890	47820
SET418	61.912	136.525	46.038	46.038	36.512	3.5	3.3	3.470	H715334	H715311
SET419	68.262	136.525	46.038	46.038	36.512	3.5	3.3	3.240	H715343	H715311

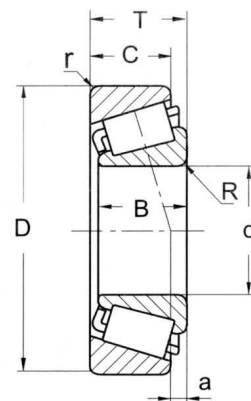


AUTOMOTIVE BEARINGS



FRONT AND REAR WHEEL BEARINGS

Tapered Roller Bearing
Inch Size



Boundary dimensions (mm)							Mass (kg)	Bearing No.	
d	D	T	B	C	Rmin	rmin		Cone	Cup
50.800	88.900	20.638	22.225	16.513	3.5	1.3	0.516	368A	362A
57.150	96.838	21.000	21.946	15.875	3.5	0.8	0.581	387A	382A
57.150	96.838	21.000	21.946	15.875	5.0	0.8	0.576	387AS	382S
63.500	110.000	22.000	21.996	18.824	3.5	1.3	0.847	395	394A
38.100	88.500	26.988	29.083	22.225	3.5	1.5	0.841	418	414
38.100	76.200	23.812	25.654	19.050	3.5	3.3	0.402	2788	2720
34.925	80.167	29.370	30.391	23.812	3.5	3.3	0.732	3379	3320
50.800	93.264	30.162	30.302	23.812	3.5	3.3	0.848	3780	3720
34.925	85.725	30.162	30.162	23.812	3.5	3.3	0.897	3872	3820
63.500	112.712	30.162	30.048	23.812	3.5	3.3	1.200	3982	3920
66.675	112.712	30.162	30.048	23.812	3.5	3.3	1.180	3984	3920
41.275	90.488	39.688	40.386	33.338	3.5	3.3	1.220	4388	4335
19.050	39.992	12.014	11.153	9.525	1.0	1.3	0.065	A6075	A6175
28.575	73.025	22.225	22.225	17.462	0.8	3.3	0.480	02872	02820
23.812	50.005	13.495	14.260	9.525	1.5	1.0	0.123	07093	07196
25.400	50.005	13.495	14.260	9.525	1.0	1.0	0.117	07100	07196
19.050	49.225	18.034	19.050	14.288	1.3	1.3	0.179	09067	09195
15.875	42.862	14.288	14.288	9.525	1.5	1.5	0.103	11590	11520
31.750	69.012	19.845	19.583	15.875	3.5	1.3	0.360	14125A	14276
26.162	61.912	19.050	19.939	14.288	0.8	2.0	0.280	15103S	15243
31.750	62.000	18.161	19.050	14.288	Spec	1.3	0.244	15123	15245
45.230	79.985	19.842	20.638	15.080	2.0	1.3	-	17887	17831
41.275	73.025	16.667	17.462	12.700	3.5	1.5	0.281	18590	18520
50.800	85.000	17.462	17.462	13.495	3.5	1.5	0.374	18790	18720
41.275	76.200	22.225	23.020	17.462	3.5	0.8	0.432	24780	24720
44.450	82.931	23.812	25.400	19.050	3.5	0.8	0.561	25580	25520
45.618	82.931	23.812	25.400	19.050	3.5	0.8	0.544	25590	25520
45.618	82.931	26.988	25.400	22.225	3.5	2.3	0.603	25590	25523
34.925	73.025	23.812	24.608	19.050	1.5	0.8	0.471	25877	25821
82.550	125.412	25.400	25.400	19.845	3.5	1.5	1.070	27687	27620
52.388	92.075	24.608	25.400	19.845	3.5	0.8	0.677	28584	28521
41.275	79.375	23.812	25.400	19.050	3.5	0.8	0.530	26882	26822
60.325	101.600	25.400	25.400	19.845	3.5	3.3	0.811	28985	28920



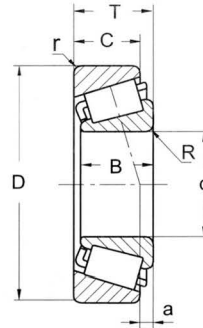
AUTOMOTIVE

AUTOMOTIVE BEARINGS



FRONT AND REAR WHEEL BEARINGS

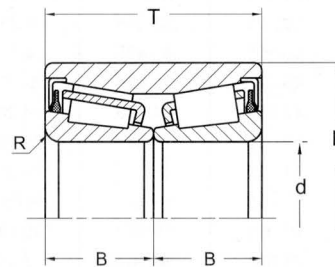
Tapered Roller Bearing
Inch Size



Boundary dimensions (mm)							Mass (kg)	Bearing No.	
d	D	T	B	C	Rmin	rmin		Cone	Cup
66.675	107.950	25.400	25.400	19.050	3.5	3.3	0.860	29590	29520
69.850	117.475	30.162	30.162	23.812	3.5	3.3	1.280	33275	33462
57.150	112.712	30.162	30.162	23.812	8.0	3.3	1.380	39581	39520
66.675	112.712	30.162	30.162	23.812	3.5	3.3	1.190	39590	39520
76.200	127.000	30.162	31.000	22.225	3.5	3.3	1.460	42687	42620
35.000	62.000	16.700	17.000	13.599	Spec	1.5	0.222	LM78349	LM78310A
25.400	59.530	23.368	23.114	18.288	0.8	1.5	0.330	M84249	M84210
30.162	64.292	21.433	21.433	16.670	1.5	1.5	0.336	M86649	M86610
33.338	68.262	22.225	22.225	17.462	0.8	1.5	0.379	M88048	M88010
34.925	72.233	25.400	25.400	19.842	2.3	2.3	0.485	HM88649	HM88610
45.242	73.431	19.588	19.812	15.748	3.5	0.8	0.307	LM102949	LM102910
50.000	82.000	21.500	21.500	17.000	3.0	0.5	0.420	JLM104948	JLM104910
50.000	90.000	28.000	28.000	23.000	3.0	2.5	0.752	JM205149	JM205110
55.000	95.000	29.000	29.000	23.500	1.5	2.5	0.820	JM207049	JM207010
40.988	67.975	17.500	18.000	13.500	Spec	1.5	0.234	LM300849	LM300811
41.275	88.900	30.162	29.370	23.020	0.8	3.3	0.892	HM803145	HM803110
41.275	88.900	30.162	29.370	23.020	3.5	3.3	0.892	HM803146	HM803110

DOUBLE ROW TAPERED ROLLER BEARINGS

Double Cones Single Cup
Metric Size



Boundary dimensions (mm)					Mass (kg)	Bearing No.
d	D	T	B	Rmin		
25	52	37	18.5			513001 (FC2552)
30	58	42	21.0			513055
34	64	37	18.5	3.0	0.518	UCF346437
38	70	38	19.0			JRM3938X2/JRM3870
39	68	37	18.5	3.5	0.55	JRM3939/JRM3968XD
39	72	37	18.5			JRM3939X2/JRM3972XD
40	72	37	18.5			JRM3940X2/JRM4072XD
42	76	39	19.5			513058 UCF427639
49	84	48	24.0			JXC 25469XC
50	84	54	27.0			UCF508454

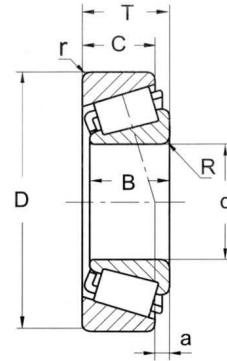


AUTOMOTIVE BEARINGS



TRUCK AND TRAILER WHEEL BEARINGS

Tapered Roller Bearing



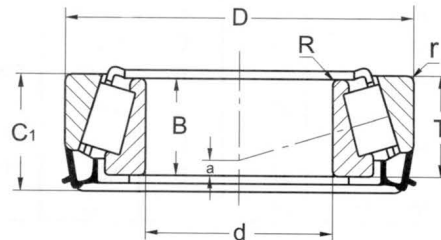
Boundary dimensions (mm)							Load Center a (mm)	Mass (kg)	Bearing No.	
d	D	T	B	C	Rmin	rmin			Cone	Cup
69.850	136.525	41.275	41.275	31.750	3.5	3.3	11.40	2.63	643	632
85.725	146.050	41.275	41.275	31.750	3.5	3.3	8.00	2.65	665	653
82.550	146.050	41.275	41.275	31.750	3.5	3.3	7.85	2.74	663	653
95.250	152.400	39.688	36.322	30.162	5.0	3.3	2.60	2.51	594A	592A
82.550	139.992	36.512	36.098	28.575	3.5	3.3	5.50	2.20	580	572
80.962	150.089	44.450	46.672	36.512	5.0	3.3	12.00	3.43	740	742
85.026	150.089	44.450	46.672	36.512	3.5	3.3	12.00	3.25	749	742
88.900	161.925	47.625	48.260	38.100	3.5	3.3	12.00	4.09	759	752
65.000	120.000	39.000	38.500	32.000	3.0	2.5	10.90	1.87	JH211749	JH211710
66.675	122.238	38.100	38.354	29.718	3.5	3.3	11.10	1.85	HM212049	HM212011
89.974	146.975	40.000	40.000	32.500	7.0	3.5	8.60	2.55	HM218248	HM218210
100.000	157.000	42.000	42.000	34.000	8.0	3.5	2.00	2.82	HM220149	HM220110
88.900	152.400	39.688	39.688	30.163	3.5	3.3	2.60	2.84	HM518445	HM518410
80.000	130.000	35.000	34.000	28.500	3.0	2.5	4.90	1.73	JM515649	JM515610
90.000	145.000	35.000	34.000	27.000	6.0	2.5	2.00	2.13	JM718149A	JM718110
80.000	140.000	35.250	33.000	28.000	2.5	2.0	4.25	2.18	32216	
90.000	160.000	42.600	40.000	34.000	2.5	2.0	6.60	3.49	32218	
80.000	130.000	37.000	37.000	29.000	2.5	0.8	7.00	1.93	33116	
90.000	150.000	45.000	45.000	35.000	3.0	1.0	10.00	3.13	33118	
65.000	120.000	41.000	41.000	32.000	2.0	1.5	7.50	2.02	33213	
75.000	130.000	41.000	41.000	31.000	2.0	1.5	9.00	2.20	33215	
85.000	150.000	49.000	49.000	37.000	2.5	2.0	11.50	3.58	33217	
66.000	124.000	41.500	41.500	34.000	7.0	3.5	12.50	2.20	H212749	H212710
76.000	132.000	39.000	39.000	32.000	7.0	3.5	10.00	2.09	HM215249	HM215210



AUTOMOTIVE

TAPERED ROLLER BEARINGS

With Single Seals



Boundary dimensions (mm)							Load Center a (mm)	Mass (kg)	Bearing No.
d	D	T	B	C1	Rmin	rmin			
25.40	50.292	14.224	14.732	16.300	1.3	1.3	3.3	0.14	L44643RS / 10
31.75	59.131	15.875	16.764	11.811	Spec	1.3	5.9	0.44	LM67048RS / 10
19.05	45.237	15.494	16.637	12.065	1.3	1.3	5.6	0.13	LM11949RS / 10