

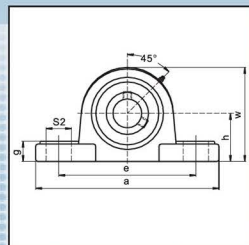
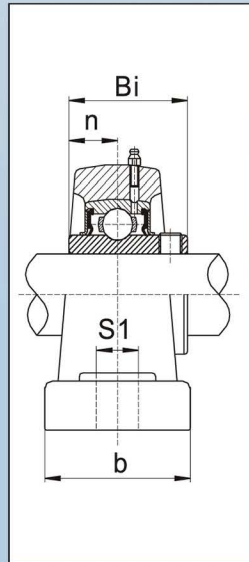
Stainless steel insert + Stainless steel housing
Roulement en acier inoxydable et palier en acier inoxydable

Corrosion resistant
Résistant à la corrosion

Platinum series

SSUCP 200 Series
 Pillow Blocks
 Set Screw Locking
 Normal Duty

SSUCP 200 Series
 Paliers à semelle
 Blocage par vis à pression
 Série standard



Unit number	Bearing Bore dia.		Dimensions (Inch / mm)										Bolt Size	Bearing no.	Housing no.	Basic Dynamic Radial Load rating (c)		Weight kg lbs	
	Inch.	mm	h	a	e	b	s1	s2	g	w	Bi	n				lbf / N			
SSUCP 201-8	1/2														SSUC 201-8	SSP 204			
202-10	5/8		1 5/16	5	3 3/4	1 1/2	7/16	1 1/16	1 9/32	2 9/16	1.221	0.500	3/8	202-10			2 450	0.87	
204		20	33.3	127.0	95	38	11	17.5	15.1	65.1	31.0	12.7		204			10 890	1.91	
204-12	3/4														204-12				
SSUCP 205		25												SSUC 205	SSP 205				
205-14	7/8		1 7/16	5 3/4	4 1/8	1 1/2	3/16	1 1/16	5/8	2 3/4	1.343	0.563	3/8	205-14			2 680	0.94	
205-15	1 5/16		36.5	140.0	105	38	12.5	17.5	16	70.0	34.1	14.3		205-15			11 910	2.07	
205-16	1														205-16				
SSUCP 206		30												SSUC 206	SSP 206				
206-17	1 1/16														206-17				
206-18	1 1/8		1 11/16	6 1/2	4 9/16	1 7/8	9/16	1 3/16	2 3/32	3 9/32	1.500	0.626	7/16	206-18			3 750	1.61	
206-19	1 3/16		42.9	165.0	121	48	14.3	21	18	83	38.1	15.9		206-19			16 670	3.54	
206-20	1 1/4														206-20				
SSUCP 207		35												SSUC 207	SSP 207				
207-20	1 1/4														207-20				
207-21	1 5/16		1 7/8	6 9/16	5	1 7/8	9/16	7/8	3/4	3 11/16	1.689	0.689	7/16	207-21			4 950	1.90	
207-22	1 3/8		47.6	167.0	127	48	14.3	22	19	94	42.9	17.5		207-22			22 000	4.18	
207-23	1 7/16														207-23				
SSUCP 208		40	1 15/16	7 1/4	5 15/32	2 1/8	9/16	7/8	3/4	3 15/16	1.689	0.748	7/16	SSUC 208	SSP 208		5 600	2.46	
208-24	1 1/2		49.2	184.0	137	54	14.3	22	19	100	49.2	19.0		208-24			24 890	5.41	
SSUCP 209		45												SSUC 209	SSP 209				
209-26	1 5/8		2 1/8	7 1/32	5 3/4	2 1/8	1 9/32	1 3/16	2 5/32	4 1 9/16	1.937	0.748	5/8	209-26			6 320	2.77	
209-27	1 11/16		54.0	190.0	146	54	15	21	20	109	49.2	19.0		209-27			28 090	6.10	
209-28	1 3/4														209-28				
SSUCP 210		50												SSUC 210	SSP 210				
210-30	1 7/8		2 1/4	8 1/8	6 1/4	2 23/64	2 3/32	1 5/16	7/8	4 1/2	2.032	0.748	5/8	210-30			6 790	3.18	
210-31	1 15/16		57.2	206.0	159	60	18	24	22	114.0	51.6	19.0		210-31			30 180	6.99	
210-32	2														210-32				



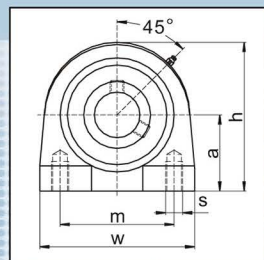
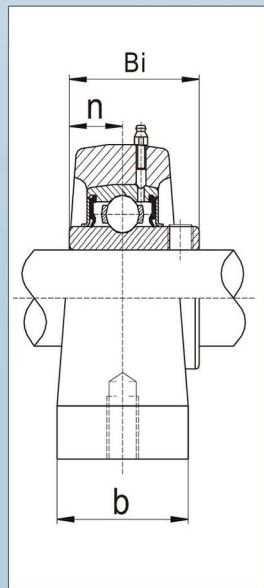
Stainless steel insert + Stainless steel housing
Roulement en acier inoxydable et palier en acier inoxydable

Corrosion resistant
Résistant à la corrosion

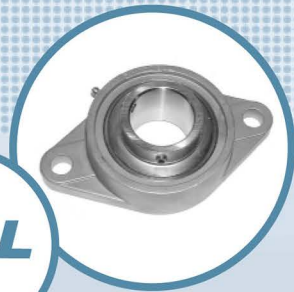
Platinum series

SSUCPA200 Series
 Tap Base Pillow Blocks
 Set Screw Locking
 Normal Duty

SSUCPA200 Series
 Paliers à base taraudée
 Blocage par vis à pression
 Série standard



Unit number	Bearing Bore dia. Inch. mm	Dimensions (Inch / mm)								Bearing no.	Housing no.	Basic Dynamic Radial Load rating (c) lbf / N	Weight kg lbs
		a	b	h	m	w	s	Bi	n				
SSUCPA 201-8	1/2									SSUC 201-8	SSPA 204		
202-10	5/8	15/16	1 1/2	2 9/16	2	2 7/8				202-10		2 450	0.70
204	20	33.3	38	65	50.8	73	3/8-16	31.0	12.7	204		10 890	1.54
204-12	3/4									204-12			
SSUCPA 205	25									SSUC 205	SSPA 205		
205-14	7/8	1 7/16	1 1/2	2 31/64	2	3				205-14		2 680	0.85
205-15	15/16	36.5	38	71	50.8	76	3/8-16	34.1	14.3	205-15		11 910	1.87
205-16	1									205-16			
SSUCPA 206	30									SSUC 206	SSPA 206		
206-17	1 1/16									206-17			
206-18	1 1/8	1 11/16	1 1/2	3 25/64	3	4 1/64				206-18		3 750	1.10
206-19	1 3/16	42.9	38	86	76.2	102	7/16-14	38.1	15.9	206-19		16 670	2.42
206-20	1 1/4									206-20			
SSUCPA 207	35									SSUC 207	SSPA 207		
207-20	1 1/4									207-20			
207-21	1 5/16	1 7/8	1 57/64	3 3/4	3 1/4	4 1/4				207-21		4 950	1.43
207-22	1 3/8	47.6	48	95.0	82.6	108	1/2-13	42.9	17.5	207-22		22 000	3.146
207-23	1 7/16									207-23			
SSUCPA 208	40	1 15/16	1 57/64	3 15/16	3 1/2	4 39/64				SSUC 208	SSPA 208	5 600	1.80
208-24	1 1/2	49.2	48.0	100	88.9	117	1/2-13	49.2	19.0	208-24		24 890	3.96
SSUCPA 209	45									SSUC 209	SSPA 209		
209-26	1 5/8	2 1/8	2 1/64	4 1/4	3 3/4	5				209-26		6 320	2.50
209-27	1 11/16	54.0	51.0	108	95.3	127	1/2-13	49.2	19.0	209-27		28 090	5.50
209-28	1 3/4									209-28			
SSUCPA 210	50									SSUC 210	SSPA 210		
210-30	1 7/8	2 1/4	2 1/64	4 39/64	4	5 33/64				210-30		6 790	3.10
210-31	1 15/16	57.2	51.0	117	101.6	140	5/8-11	51.6	19.0	210-31		30 180	6.82
210-32	2									210-32			



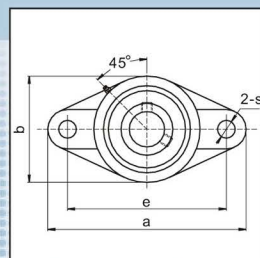
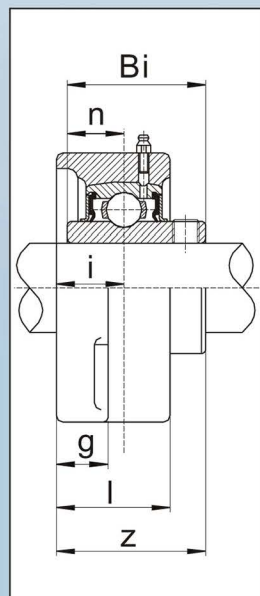
Stainless steel insert + Stainless steel housing
Roulement en acier inoxydable et palier en acier inoxydable

Corrosion resistant
Résistant à la corrosion

Platinum series

SSUCFL 200 Series
 Two Bolt Flange Units
 Set Screw Locking
 Normal Duty

SSUCFL 200 Series
 Paliers appliqués à 2 trous
 Blocage par vis à pression
 Série standard



Unit number	Bearing Bore dia. Inch. mm	Dimensions (Inch / mm)											Bolt Size	Bearing no.	Housing no.	Basic Dynamic Radial Load rating (c) lbf / N	Weight kg lbs	
		a	e	b	g	l	s	z	i	Bi	n							
SSUCFL 201-8	1/2													SSUC	201-8	SSFL 204		
202-10	5/8	4 13/32	3 17/32	2 23/64	29/64	1	25/64	15/16	19/32	1.221	0.500	3/8	202-10			2 450	0.50	
204	20	112	89.7	60	11.5	25.4	10	33.4	15.1	31.0	12.7	204			10 890	1.10		
204-12	3/4													204-12				
SSUCFL 205	25												SSUC	205	SSFL 205			
205-14	7/8	4 59/64	3 57/64	2 11/16	1/2	1 1/16	15/32	1 9/32	5/8	1.343	0.563	3/8	205-14			2 680	0.64	
205-15	15/16	125	98.8	68	13	27	12	35.7	15.9	34.1	14.3	205-15			11 910	1.408		
205-16	1													205-16				
SSUCFL 206	30												SSUC	206	SSFL 206			
206-17	1 1/16													206-17				
206-18	1 1/8	5 35/64	4 19/32	3 5/32	1/2	1 3/16	15/32	1 37/64	45/64	1.500	0.626	3/8	206-18			3 750	0.90	
206-19	1 3/16	141	116.7	80.0	13	30	12	40.1	17.9	38.1	15.9	206-19			16 670	1.98		
206-20	1 1/4													206-20				
SSUCFL 207	35												SSUC	207	SSFL 207			
207-20	1 1/4													207-20				
207-21	1 5/16	6 1/8	5 1/8	3 5/64	9/16	1 19/64	1/2	1 3/4	3/4	1.689	0.689	7/16	207-21			4 950	1.22	
207-22	1 3/8	155.5	130.2	90.0	14.3	33	13	44.5	19.1	42.9	17.5	207-22			22 000	2.64		
207-23	1 7/16													207-23				
SSUCFL 208	40	6 3/4	5 21/32	3 5/16	9/16	1 27/64	1/2	2 1/64	13/16	1.689	0.748	7/16	SSUC	208	SSFL 208		5 600	1.63
208-24	1 1/2	171.5	143.7	100	14.3	36	13	51.2	21	49.2	19.0	208-24			24 890	3.59		
SSUCFL 209	45												SSUC	209	SSFL 209			
209-26	1 5/8	7 3/64	5 27/32	4 1/4	9/16	1 1/2	19/32	2 3/64	55/64	1.937	0.748	5/8	209-26			6 320	1.84	
209-27	1 11/16	179	148.4	108	14.3	38	15	52	21.8	49.2	19.0	209-27			28 090	4.05		
209-28	1 3/4													209-28				
SSUCFL 210	50												SSUC	210	SSFL 210			
210-30	1 7/8	7 7/16	6 3/16	4 17/32	19/32	1 17/32	19/32	2 9/64	55/64	2.032	0.748	5/8	210-30			6 790	2.16	
210-31	1 15/16	189	157	115	15.1	39	15	54.4	21.8	51.6	19.0	210-31			30 180	4.75		
210-32	2													210-32				



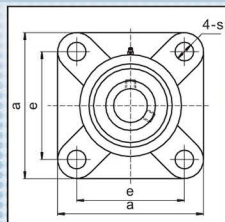
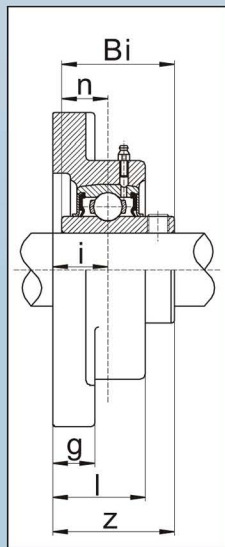
Stainless steel insert + Stainless steel housing
Roulement en acier inoxydable et palier en acier inoxydable

Corrosion resistant
Résistant à la corrosion

Platinum series

SSUCF 200 Series
 Four Bolt Flange Units
 Set Screw Locking
 Normal Duty

SSUCF 200 Series
 Paliers appliqués à 4 trous
 Blocage par vis à pression
 Série standard



Unit number	Bearing Bore dia. Inch. mm	Dimensions (Inch / mm)										Bolt Size	Bearing no.	Housing no.	Basic Dynamic Radial Load rating (c) lbf / N	Weight kg lbs
		a	e	g	l	s	z	i	Bi	n						
SSUCF 201-8	1/2												SSUC 201-8	SSF 204		
202-10	5/8	3/8	2 1/2	15/32	1	7/16	1 5/16	19/32	1.221	0.500	3/8	202-10		2 450	0.645	
204	20	86	63.5	12	25.4	11	33.4	15.1	31.0	12.7		204		10 890	1.42	
204-12	3/4											204-12				
SSUCF 205	25											SSUC 205	SSF 205			
205-14	7/8	3 3/4	2 3/4	9/16	1 1/16	29/64	1 13/32	5/8	1.343	0.563	3/8	205-14		2 680	0.85	
205-15	15/16	95	70	14.0	27	11.5	35.7	15.9	34.1	14.3		205-15		11 910	1.87	
205-16	1											205-16				
SSUCF 206	30											SSUC 206	SSF 206			
206-17	1 1/16											206-17				
206-18	1 1/8	4 1/4	3 1/4	9/16	1 3/16	33/64	1 37/64	45/64	1.500	0.626	3/8	206-18		3 750	1.17	
206-19	1 3/16	108	82.5	14	30	13.1	40.1	17.9	38.1	15.9		206-19		16 670	2.57	
206-20	1 1/4S											206-20				
SSUCF 207	35											SSUC 207	SSF 207			
207-20	1 1/4											207-20				
207-21	1 5/16	4 5/8	3 5/8	9/16	1 19/64	33/64	1 3/4	3/4	1.689	0.689	7/16	207-21		4 950	1.51	
207-22	1 3/8	117.5	92	14.3	33	13.1	44.5	19.1	42.9	17.5		207-22		22 000	3.32	
207-23	1 7/16											207-23				
SSUCF 208	40	5 1/8	4	9/16	1 27/64	9/16	2 1/64	13/16	1.689	0.748	7/16	SSUC 208	SSF 208	5 600	2.02	
208-24	1 1/2	130	101.6	14.3	36	14	51.2	21	49.2	19.0		208-24		24 890	4.44	
SSUCF 209	45											SSUC 209	SSF 209			
209-26	1 5/8	5 15/32	4 1/8	9/16	1 1/2	5/8	2 3/64	55/64	1.937	0.748	5/8	209-26		6 320	2.18	
209-27	1 11/16	137	104.8	14.3	38	16	52	21.8	49.2	19.0		209-27		28 090	4.80	
209-28	1 3/4											209-28				
SSUCF 210	50											SSUC 210	SSF 210			
210-30	1 7/8	5 5/8	4 3/8	19/32	1 17/32	5/8	2 9/64	55/64	2.032	0.748	5/8	210-30		6 790	2.43	
210-31	1 15/16	143	111	15.1	39	16	54.4	21.8	51.6	19.0		210-31		30 180	5.35	
210-32	2											210-32				



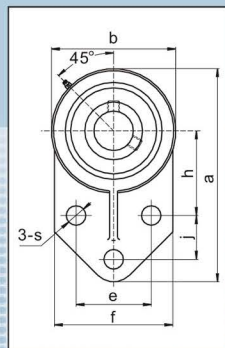
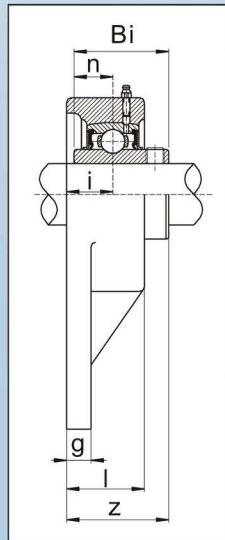
Stainless steel insert + Stainless steel housing
Roulement en acier inoxydable et palier en acier inoxydable

Corrosion resistant
Résistant à la corrosion

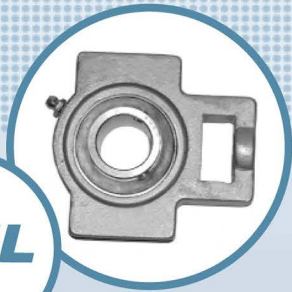
Platinum series

SSUCFB 200 Series
 Flange bracket
 Set Screw locking
 Normal Duty

SSUCFB 200 Series
 Paliers appliqués à 3 trous
 Blocage par vis à pression
 Série standard



Unit number	Bearing Bore dia.	Dimensions (Inch / mm)														Bolt Size	Bearing no.	Housing no.	Weight kg lbs	
		Inch.	mm	a	h	e	j	i	g	l	s	b	f	z	Bi					n
SSUCFB 201-8	1/2																	SSUC 201-8	SSFB 204	
202-10	5/8			4 1/4	1 1/16	1 1/2	7/8	5/8	5/16	1	29/64	23/64	223/64	1 1/32	1.220	0.500	5/16	202-10		0.58
204		20	108	42.9	38.1	22.2	16	8	25.4	9.9	63	60	34.3	31	12.7	M8	204		1.28	
204-12	3/4																204-12			
SSUCFB 205		25															SSUC 205	SSFB 205		
205-14	7/8			4 9/64	1 13/16	1 5/8	1 1/8	2 1/32	3/8	1 9/64	25/64	2 3/4	2 33/64	1 29/64	1.343	0.563	5/16	205-14		0.74
205-15	1 5/16			121	46	41.3	28.6	17	9.5	29	9.9	70	64	36.8	34.1	14.3	M8	205-15		1.63
205-16	1																205-16			
SSUCFB 206		30															SSUC 206	SSFB 206		
206-17	1 1/16																206-17			
206-18	1 1/8			5 25/64	2 1/16	1 7/8	1 1/4	3/4	3/8	1 1/4	29/64	3 17/64	2 3/4	1 5/8	1.500	0.626	5/16	206-18		1.09
206-19	1 3/16			137	52.4	47.6	31.8	19	9.5	32	9.9	83	70	41.2	38.1	15.9	M8	206-19		2.40
206-20	1 1/45																206-20			
SSUCFB 207		35															SSUC 207	SSFB 207		
207-20	1 1/4																207-20			
207-21	1 5/16			6 9/64	2 3/8	2	1 1/4	1 3/16	1 1/32	1 29/64	33/64	3 3/4	3 1/4	1 53/64	1.689	0.689	3/8	207-21		1.64
207-22	1 3/8			156	60.3	50.8	31.8	21	13.5	37	13.1	95	82.5	46.4	42.9	17.5	M10	207-22		3.61
207-23	1 7/16																207-23			
SSUCFB 208		40															SSUC 208	SSFB 208	2.29	
208-24	1 1/2			6 29/64	2 23/64	1 31/32	1 39/64	1 3/16	5/8	1 11/32	7/16	3 15/16	3 5/64	2 1/64	1.937	0.748	3/8	208-24		5.04
208-25	1 9/16			164	60	50	41	21	16	34	11.1	100	78	51.2	49.2	19	M10			
SSUCFB 209		45															SSUC 209	SSFB 209		
209-26	1 5/8			6 27/32	2 9/16	2 1/8	1 11/16	1 9/16	2 3/32	1 11/32	7/16	4 11/64	3 5/32	2 1/64	1.937	0.748	3/8	209-26		2.59
209-27	1 11/16			174	65	54	42.9	21	18	34	11.1	106	80	51.2	49.2	19	M10	209-27		5.70
209-28	1 3/4																209-28			
SSUCFB 210		50															SSUC 210	SSFB 210		
210-30	1 7/8			7 33/64	2 19/16	2 3/4	1 5/8	1 3/16	1 1/2	1 1/2	33/64	4 11/64	4 1/64	2 7/64	2.032	0.748	3/8	210-30		3.14
210-31	1 15/16			191	74.6	69.9	41.3	21	13	38	13.1	118	102	53.6	51.6	19	M10	210-31		6.91
210-32	25																210-32			



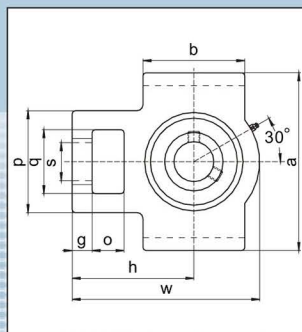
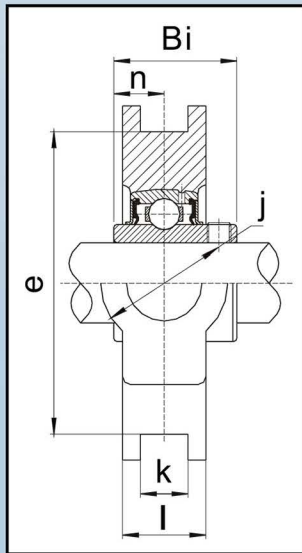
Stainless steel insert + Stainless steel housing
Roulement en acier inoxydable et palier en acier inoxydable

Corrosion resistant
Résistant à la corrosion

Platinum series

SSUCT 200 Series
 Take-Up unit
 Set screw locking
 Normal Duty

SSUCT 200 Series
 Coulisseaux tendeurs
 Blocage par vis à pression
 Série standard



Unit number	Bearing Bore dia. Inch. mm	Dimensions (inch / mm)															Bearing No.	Housing No.	Weight kg/Lbs
		o	g	p	q	s	b	k	e	a	w	l	j	h	Bi	n			
SSUCT 201-8	1/2																SSUC 201-8	SS-T 204	
202-10	5/8	5/8	13/32	2	1 1/4	3/4	2	15/32	3	3 1/2	3 11/16	13/16	1 1/4	2 13/32	1.220	0.500	202-10		0.91
204	20	16	10	51	32	19	51	12	76	89	94	21	32	61	31	12.7	204		2.00
204-12	3/4																204-12		
SSUCT 205	25																SSUC 205	SS-T 205	
205-14	7/8	5/8	13/32	2	1 1/4	3/4	2	15/32	3	3 1/2	3 13/16	15/16	1 1/4	2 7/16	1.343	0.563	205-14		0.99
205-15	15/16	16	10	51	32	19	51	12	76	89	97	24	32	62	34.1	14.3	205-15		2.18
205-16	1																205-16		
SSUCT 206	30																SSUC 206	SS-T 206	
206-17	1 1/16																206-17		
206-18	1 1/8	5/8	13/32	2 7/32	1 29/64	7/8	2 1/4	15/32	3 1/2	4 1/64	4 7/16	1 3/32	1 29/64	2 3/4	1.500	0.626	206-18		1.46
206-19	1 3/16	16	10	56	37	22	57	12	89	102	113	28	37	70	38.1	15.9	206-19		3.21
206-20	1 1/4																206-20		
SSUCT 207	35																SSUC 207	SS-T 207	
207-20	1 1/4																207-20		
207-21	1 5/16	5/8	1/2	2 33/64	1 29/64	7/8	2 33/64	15/32	3 1/2	4 1/64	5 5/64	1 3/16	1 29/64	3 5/64	1.689	0.689	207-21		1.81
207-22	1 3/8	16	13	64	37	22	64	12	89	102	129	30	37	78	42.9	17.5	207-22		3.98
207-23	1 7/16																207-23		
SSUCT 208	40																SSUC 208	SS-T 208	
208-24	1 1/2	3/4	5/8	3 9/32	1 59/64	1 3/16	3 9/32	5/8	4 1/64	4 1/2	5 11/16	1 19/64	1 59/64	3 15/32	1.937	0.748	208-24		2.68
208-25	1 9/16	19	16	83	49	29	83	16	102	114	144	33	49	88	49.2	19	208-25		5.90
SSUCT 209	45																SSUC 209	SS-T 209	
209-26	1 5/8	3/4	5/8	3 9/32	1 59/64	1 3/16	3 9/32	5/8	4 1/64	4 19/32	5 11/16	1 3/8	1 59/64	3 27/64	1.937	0.748	209-26		2.99
209-27	1 11/16	19	16	83	49	29	83	16	102	117	144	35	49	87	49.2	19	209-27		6.58
209-28	1 3/4																209-28		
SSUCT 210	50																SSUC 210	SS-T 210	
210-30	1 7/8	3/4	5/8	3 9/32	1 59/64	1 3/16	3 25/64	5/8	4 1/64	4 19/32	5 15/16	1 29/64	1 59/64	3 5/32	2.031	0.748	210-30		3.01
210-31	1 15/16	19	16	83	49	29	86	16	102	117	149	37	49	90	51.6	19	210-31		6.62
210-32	2																210-32		



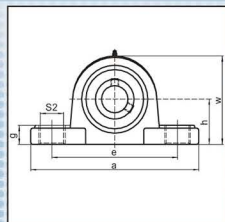
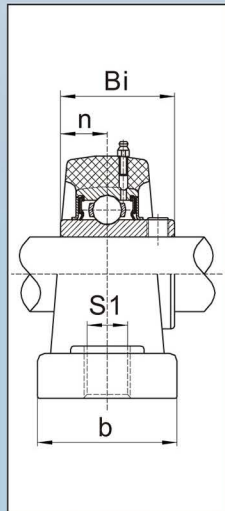
Stainless steel insert + Thermoplastic housing
Roulement en acier inoxydable et palier en thermoplastique

Corrosion resistant
Résistant à la corrosion

Platinum series

SSUCTPP 200 Series
 Pillow Blocks
 Set Screw Locking
 Normal Duty

SSUCTPP 200 Series
 Paliers à semelle
 Blocage par vis à pression
 Série standard



Unit number	Bearing Bore dia.		Dimensions (Inch / mm)										Bolt Size	Bearing no.	Housing no.	Basic Dynamic Radial Load rating (c) lbf / N	Weight kg lbs	
	Inch.	mm	h	a	e	b	s1	s2	g	w	Bi	n						
SSUCTPP 201-8	1/2														SSUC 201-8	TP-P 204		
202-10	5/8		15/16	5	33/4	11/2	7/16	9/16	9/16	23/64	1.221	0.500	3/8	202-10		2 450	0.31	
204		20	33.3	127.0	95	38	11	14	14.2	65.5	31.0	12.7		204		10 890	0.68	
204-12	3/4														204-12			
SSUCTPP 205		25												SSUC 205	TP-P 205			
205-14	7/8		17/16	51/2	41/8	11/2	7/16	9/16	37/64	25/64	1.343	0.563	3/8	205-14		2 680	0.34	
205-15	15/16		36.5	140.5	105	38	11	14	14.5	71	34.1	14.3		205-15		11 910	0.75	
205-16	1														205-16			
SSUCTPP 206		30												SSUC 206	TP-P 206			
206-17	11/16														206-17			
206-18	11/8		11/16	613/32	411/16	113/16	9/16	23/32	45/64	35/16	1.500	0.626	1/2	206-18		3 750	0.57	
206-19	13/16		42.9	163.0	119	46	14	18	17.8	84.0	38.1	15.9		206-19		16 670	1.25	
206-20	11/45														206-20			
SSUCTPP 207		35												SSUC 207	TP-P 207			
207-20	11/4														207-20			
207-21	15/16		17/8	65/8	5	17/8	9/16	23/32	23/32	323/32	1.689	0.689	1/2	207-21		4 950	0.75	
207-22	13/8		47.6	168.0	127	48	14	18	18.0	94.5	42.9	17.5		207-22		22 000	1.65	
207-23	17/16														207-23			
SSUCTPP 208		40	115/16	71/4	525/64	21/8	9/16	23/32	49/64	33/32	1.689	0.748	1/2	SSUC 208	TP-P 208	5 600	1.00	
208-24	11/2		49.2	184.0	137	54	14	18	19.5	101	49.2	19.0		208-24		24 890	2.20	
SSUCTPP 209		45												SSUC 209	TP-P 209			
209-26	15/8		21/8	79/16	53/4	21/8	21/32	25/32	29/32	411/64	1.937	0.748	1/2	209-26		6 320	1.17	
209-27	111/16		54.0	192.0	146	54	17	20	23.0	106.0	49.2	19.0		209-27		28 090	2.58	
209-28	13/4														209-28			
SSUCTPP 210		50												SSUC 210	TP-P 210			
210-30	17/8		21/4	81/8	61/4	23/8	21/32	25/32	29/32	41/2	2.032	0.748	5/8	210-30		6 790	1.28	
210-31	115/16		57.2	206.0	159	60	17	20	23.0	114.0	51.6	19.0		210-31		30 180	2.80	
210-32	2														210-32			



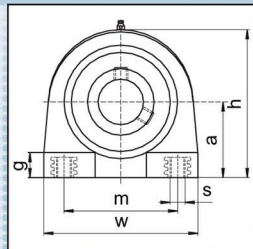
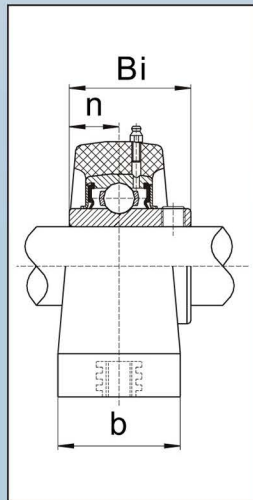
Stainless steel insert + Thermoplastic housing
Roulement en acier inoxydable et palier en thermoplastique

Corrosion resistant
Résistant à la corrosion

Platinum series

SSUCTPTB 200 Series
 Tap Base Pillow Blocks
 Set Screw Locking
 Normal Duty

SSUCTPTB 200 Series
 Paliers à base taraudée
 Blocage par vis à pression
 Série standard



Unit number	Bearing Bore dia.	Dimensions (Inch / mm)										Bearing no.	Housing no.	Basic Dynamic Radial Load rating (c) lbf / N	Weight kg lbs	
		Inch.	mm	a	b	h	m	w	s	Bi	n					g
SSUCTPTB 201-8	1/2												SSUC 201-8	TP-TB 204		
202-10	5/8			1 5/16	1.36	2 19/32	2	2 7/8		1.221	0.500	1/2	202-10		2 450	0.27
204		20	33.3	34.5	66.0	50.8	72.8	3/8-16	31.0	12.7	13	204		10 890	0.59	
204-12	3/4											204-12				
SSUCTPTB 205		25										SSUC 205	TP-TB 205			
205-14	7/8			1 7/16	1.56	2 57/64	2	3		1.343	0.563	1/2	205-14		2 680	0.315
205-15	15/16			36.5	39.5	73.5	50.8	76.2	3/8-16	34.1	14.3	13	205-15		11 910	0.69
205-16	1											205-16				
SSUCTPTB 206		30										SSUC 206	TP-TB 206			
206-17	1 1/16											206-17				
206-18	1 1/8			1 11/16	1.67	3 5/16	3	3 31/32		1.500	0.626	5/8	206-18		3 750	0.50
206-19	1 3/16			42.9	42.5	84.0	76.2	101	7/16-14	38.1	15.9	16	206-19		16 670	1.10
206-20	1 1/45											206-20				
SSUCTPTB 207		35										SSUC 207	TP-TB 207			
207-20	1 1/4											207-20				
207-21	1 5/16			1 7/8	1.87	3 3/4	3 1/4	4 11/32		1.689	0.689	23/32	207-21		4 950	0.73
207-22	1 3/8			47.6	47.5	95.0	82.6	110	1/2-13	42.9	17.5	18	207-22		22 000	1.61
207-23	1 7/16											207-23				
SSUCTPTB 208		40										SSUC 208	TP-TB 208			
208-24	1 1/2			1 15/16	1.89	3 61/64	3 1/2	4 23/32		1.689	0.748	25/32	208-24		5 600	0.94
				49.2	48.0	100.5	88.9	120	1/2-13	49.2	19.0	20			24 890	2.07
SSUCTPTB 209		45										SSUC 209	TP-TB 209			
209-26	1 5/8			2 1/8	1 31/32	4 17/64	3 3/4	4 7/8		1.937	0.748	25/32	209-26		6 320	1.10
209-27	1 11/16			54.0	50	108.5	95.3	124	1/2-13	49.2	19.0	20	209-27		28 090	2.42
209-28	1 3/4											209-28				
SSUCTPTB 210		50										SSUC 210	TP-TB 210			
210-30	1 7/8			2 1/4	2 1/8	4 17/32	4	5 5/16		2.032	0.748	7/8	210-30		6 790	1.24
210-31	1 15/16			57.2	54	115	101.6	135	5/8-11	51.6	19.0	22	210-31		30 180	2.73
210-32	2											210-32				



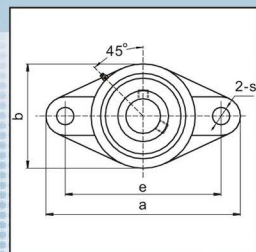
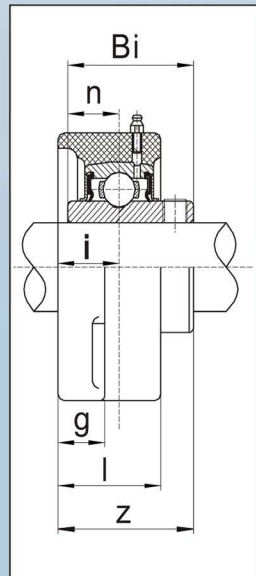
Stainless steel insert + Thermoplastic housing
Roulement en acier inoxydable et palier en thermoplastique

Corrosion resistant
Résistant à la corrosion

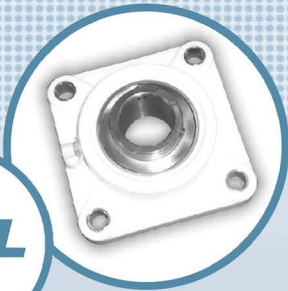
Platinum series

SSUCTPFL 200 Series
 Two Bolt Flange Units
 Set Screw Locking
 Normal Duty

SSUCTPFL 200 Series
 Paliers appliqués à 2 trous
 Blocage par vis à pression
 Série standard



Unit number	Bearing Bore dia.		Dimensions (Inch / mm)										Bolt Size	Bearing no.	Housing no.	Basic Dynamic Radial Load rating (c) lbf / N	Weight kg lbs	
	Inch.	mm	a	e	b	g	l	s	z	i	Bi	n						
SSUCTPFL 201-8	1/2														SSUC 201-8	TP-FL 204		
202-10	5/8		47/16	3 ³⁵ /64	2 ⁹ /16	17/32	13/64	7/16	15/16	1 ¹⁹ /32	1.221	0.500			202-10		2 450	0.26
204		20	113	90	65	13.4	26.5	11	33.3	15	31.0	12.7	3/8	204		10 890	0.57	
204-12	3/4														204-12			
SSUCTPFL 205		25													SSUC 205	TP-FL 205		
205-14	7/8		5 ⁵ /32	3 ⁵⁷ /64	2 ³ /4	9/16	17/64	7/16	1 ²⁷ /64	2 ¹ /32	1.343	0.563			205-14		2 680	0.31
205-15	1 ⁵ /16		131	99	70	14.3	28	11	36.3	16.5	34.1	14.3	3/8	205-15		11 910	0.68	
205-16	1														205-16			
SSUCTPFL 206		30													SSUC 206	TP-FL 206		
206-17	1 ¹ /16														206-17			
206-18	1 ¹ /8		5 ¹³ /16	4 ¹⁹ /32	3 ⁵ /32	9/16	1 ¹³ /64	7/16	1 ³⁷ /64	2 ³ /32	1.500	0.626			206-18		3 750	0.46
206-19	1 ³ /16		148	117	80.0	14.3	30.5	11	40.2	18	38.1	15.9	1/2	206-19		16 670	1.01	
206-20	1 ¹ /45														206-20			
SSUCTPFL 207		35													SSUC 207	TP-FL 207		
207-20	1 ¹ /4														207-20			
207-21	1 ⁵ /16		6 ⁷ /16	5 ¹ /8	3 ³⁵ /64	3 ⁹ /64	1 ¹⁷ /64	1/2	1 ³ /4	3/4	1.689	0.689			207-21		4 950	0.64
207-22	1 ³ /8		164	130	90.0	15.5	32	13	44.4	19	42.9	17.5	1/2	207-22		22 000	1.41	
207-23	1 ⁷ /16														207-23			
SSUCTPFL 208		40	6 ¹⁵ /16	5 ¹¹ /16	3 ¹⁵ /16	2 ¹ /32	1 ³ /8	9/16	2 ¹ /32	2 ¹ /32	1.689	0.748			SSUC 208	TP-FL 208	5 600	0.87
208-24	1 ¹ /2		176	144	100	17	35	14	51.7	21.5	49.2	19.0	1/2	208-24		24 890	1.91	
SSUCTPFL 209		45													SSUC 209	TP-FL 209		
209-26	1 ⁵ /8		7 ⁷ /16	5 ⁷ /8	4 ¹ /4	1 ³ /16	1 ⁵ /8	2 ¹ /32	2 ¹ /8	1 ⁵ /16	1.937	0.748			209-26		6 320	1.02
209-27	1 ¹¹ /16		189	149	108	21.0	41.0	17	54.2	24	49.2	19.0	5/8	209-27		28 090	2.24	
209-28	1 ³ /4														209-28			
SSUCTPFL 210		50													SSUC 210	TP-FL 210		
210-30	1 ⁷ /8		7 ³ /4	6 ³ /16	4 ¹⁷ /32	1 ³ /16	1 ¹¹ /16	2 ¹ /32	2 ¹⁷ /64	3 ¹ /32	2.032	0.748			210-30		6 790	1.12
210-31	1 ¹⁵ /16		197	157	115	21.0	43.0	17	57.6	25	51.6	19.0	5/8	210-31		30 180	2.50	
210-32	2														210-32			



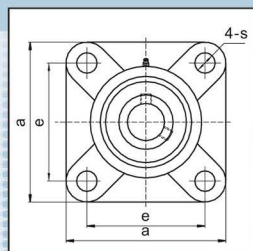
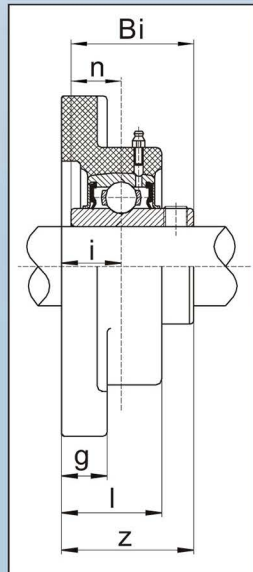
Stainless steel insert + Thermoplastic housing
Roulement en acier inoxydable et palier en thermoplastique

Corrosion resistant
Résistant à la corrosion

Platinum series

SSUCTPF 200 Series
 Four Bolt Flange Units
 Set Screw Locking
 Normal Duty

SSUCTPF 200 Series
 Paliers appliqués à 4 trous
 Blocage par vis à pression
 Série standard



Unit number	Bearing Bore dia.		Dimensions (Inch / mm)								Bolt Size	Bearing no.	Housing no.	Basic Dynamic Radial Load rating (c) lbf / N	Weight kg lbs		
	Inch.	mm	a	e	g	l	s	z	i	Bi						n	
SSUCTPF 201-8	1/2													SSUC 201-8	PT-F204		
202-10	5/8		3/8	2 1/2	17/32	1 3/32	7/16	1 23/64	4 1/64	1.221	0.500	3/8	202-10		2 450	0.30	
204		20	86	63.5	13.4	27.8	11	34.6	16.3	31.0	12.7		204		10 890	0.66	
204-12	3/4													204-12			
SSUCTPF 205		25												SSUC 205	TP-F205		
205-14	7/8		3 3/4	2 3/4	9/16	1 1/8	7/16	1 7/16	2 1/32	1.339	0.563	3/8	205-14		2 680	0.35	
205-15	1 5/16		95	70	14.3	28.5	11	36.7	17	34.0	14.3		205-15		11 910	0.77	
205-16	1													205-16			
SSUCTPF 206		30												SSUC 206	TP-F206		
206-17	1 1/16														206-17		
206-18	1 1/8		4 7/32	3 9/32	0.563	1 1/4	7/16	1 5/8	3/4	1.500	0.626	3/8	206-18		3 750	0.51	
206-19	1 3/16		107	83	14.3	31.5	11	41.2	19	38.1	15.9		206-19		16 670	1.12	
206-20	1 1/4													206-20			
SSUCTPF 207		35												SSUC 207	TP-F207		
207-20	1 1/4														207-20		
207-21	1 5/16		4 21/32	3 5/8	3 9/64	1 23/64	1/2	1 27/32	2 1/32	1.689	0.689	7/16	207-21		4 950	0.73	
207-22	1 3/8		118	92	15.5	34.5	13	46.9	21.5	42.9	17.5		207-22		22 000	1.61	
207-23	1 7/16													207-23			
SSUCTPF 208		40	5 1/8	4 1/64	2 1/32	1 7/16	9/16	2 3/32	2 9/32	1.689	0.748	1/2	SSUC 208	TP-F208	5 600	1.01	
208-24	1 1/2		130	102	17	36.5	14	53.2	23	49.2	19.0		208-24		24 890	2.22	
SSUCTPF 209		45												SSUC 209	TP-F209		
209-26	1 5/8		5 15/32	4 1/8	3/4	1 5/8	2 1/32	2 1/8	1 5/16	1.937	0.748	1/2	209-26		6 320	1.18	
209-27	1 11/16		137	105	19	41.0	17	54.2	24	49.2	19.0		209-27		28 090	2.60	
209-28	1 3/4													209-28			
SSUCTPF 210		50												SSUC 210	TP-F210		
210-30	1 7/8		5 5/8	4 3/8	1 3/16	1 11/16	2 1/32	2 17/64	3 1/32	2.032	0.748	1/2	210-30		6 790	1.30	
210-31	1 15/16		143	111	21	43.0	17	57.6	25	51.6	19.0		210-31		30 180	2.86	
210-32	2													210-32			



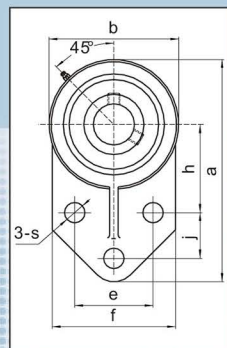
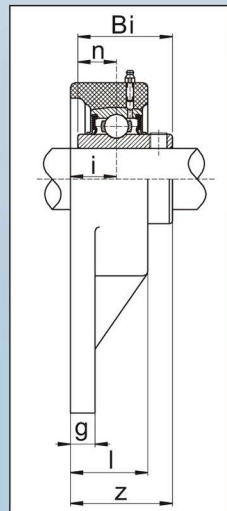
Stainless steel insert + Thermoplastic housing
Roulement en acier inoxydable et palier en thermoplastique

Corrosion resistant
Résistant à la corrosion

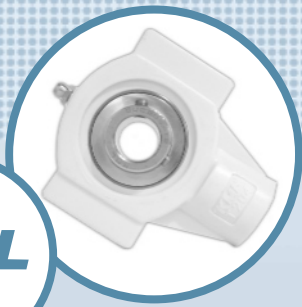
Platinum series

SSUCTPFB 200 Series
 Flange bracket
 Set screw locking
 Normal duty

SSUCTPFB 200 Series
 Paliers appliqués à 3 trous
 Blocage par vis à pression
 Série Standard



Unit number	Bearing Bore dia. Inch. mm	Dimensions (inch / mm)												Bolt Size	Bearing No.	Housing No.	Weight kg/Lbs		
		a	h	e	j	i	g	l	s	b	f	z	Bi	n					
SSUCTPFB 201-8	1/2															SSUC 201-8	TP-FB 204		
202-10	5/8	4 1/4	1 11/16	1 1/2	7/8	5/8	29/64	1 21/64	27/64	2 1/2	27/16	1 11/32	1.220	0.500	5/16	202-10		0.26	
204	20	108	42.9	38.1	22.2	15.9	11.4	33.7	10.7	63.5	62	34.2	31	12.7	M8	204		0.572	
204-12	3/4																204-12		
SSUCTPFB 205	25															SSUC 205	TP-FB 205		
205-14	7/8	4 3/4	1 13/16	1 5/8	1 1/8	2 1/32	29/64	1 5/8	27/64	2 3/4	2 1/2	17/16	1.343	0.563	5/16	205-14		0.31	
205-15	15/16	120.6	46	41.3	28.6	16.7	11.4	41.2	10.7	70	63.5	36.5	34.1	14.3	M8	205-15		0.68	
205-16	1																205-16		
SSUCTPFB 206	30															SSUC 206	TP-FB 206		
206-17	1 1/16	5 29/64	2 1/16	1 7/8	1 1/4	47/64	17/32	1 41/64	27/64	3 9/32	3	1 39/64	1.500	0.626	5/16	206-17		0.49	
206-18	1 1/8	138.5	52.4	47.6	31.8	18.6	13.3	41.5	10.7	83	76	40.8	38.1	15.9	M8	206-18		1.08	
206-19	1 3/16																206-19		
206-20	1 1/45																206-20		
SSUCTPFB 207	35															SSUC 207	TP-FB 207		
207-20	1 1/4	6 3/16	2 3/8	2	1 1/4	13/16	4 1/64	1 55/64	33/64	3 3/4	3 1/2	1 53/64	1.689	0.689	3/8	207-20		0.71	
207-21	1 5/16	157	60.3	50.8	31.8	21	16.1	47.1	13.1	95	89	46.4	42.9	17.5	M10	207-21		1.56	
207-22	1 3/8																207-22		
207-23	1 7/16																207-23		



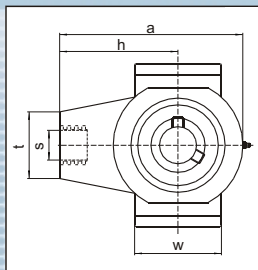
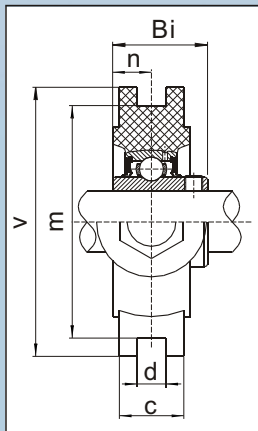
Stainless steel insert + Thermoplastic housing
Roulement en acier inoxydable et palier en thermoplastique

Corrosion resistant
Résistant à la corrosion

Platinum series

SSUCTPT 200 Series
 Take-Up units
 Set screw locking
 Normal duty

SSUCTPT 200 Series
 Coulisseaux tendeurs
 Blocage par vis à pression
 Série standard



Unit number	Bearing Bore dia.		Dimensions (Inch / mm)											Bearing no.	Housing no.	Weight kg lbs
	Inch.	mm	a	c	d	h	m	t	v	w	Bi	n	s			
SSUCTPT 201-8	1/2													SSUC 201-8	TP-T 204	
202-10	5/8		3 57/64	1 5/64	15/32	2 33/64	3	1 27/64	3 31/64	1 27/32	1.220	0.550	1/2	202-10		0.36
204		20	99	27.5	12	64	76	36	88	47	31.0	12.7	M16	204		0.79
204-12	3/4													204-12		
SSUCTPT 205		25												SSUC 205	TP-T 205	
205-14	7/8		3 57/64	1 5/64	15/32	2 33/64	3	1 27/64	3 31/64	1 27/32	1.343	0.563	1/2	205-14		0.37
205-15	15/16		99	27.5	12	64	76	36	88	47	34.1	14.3	M16	205-15		0.81
205-16	1													205-16		
SSUCTPT 206		30												SSUC 206	TP-T 206	
206-17	1 1/16													206-17		
206-18	1 1/8		4 59/64	1 29/64	15/32	3	3 1/2	1 37/64	4	2 31/64	1.550	0.626	5/8	206-18		0.61
206-19	1 3/16		125	34.5	12	76	89	40	102	63	38.1	15.9	M16	206-19		1.34
206-20	1 1/45													206-20		
SSUCTPT 207		35												SSUC 207	TP-T 207	
207-20	1 1/4													207-20		
207-21	1 5/16		4 59/64	1 29/64	15/32	3	3 1/2	1 37/64	4	2 31/64	1.689	0.689	5/8	207-21		0.75
207-22	1 3/8		125	34.5	12	76	89	40	102	63	42.9	17.5	M16	207-22		1.65
207-23	1 7/16													207-23		
SSUCTPT 208		40	5 1/2	1 29/64	5/8	3 11/32	4 1/64	1 37/64	4 15/32	3 5/32	1.937	0.748	5/8	SSUC 208	TP-T 208	1.01
208-24	1 1/2		140	34.5	16	85	102	40	114	80	49.2	19.0	M16	208-24		2.22
SSUCTPT 209		45												SSUC 209	TP-T 209	
209-26	1 5/8		5 7/8	1 37/64	5/8	3 35/64	4	1 31/32	4 39/64	3 11/32	1.937	0.748		209-26		1.17
209-27	1 11/16		149	40	16	90	102	50	117	85	49.2	19	M20	209-27		2.57
209-28	1 3/4													209-28		
SSUCTPT 210		50												SSUC 210	TP-T 210	
210-30	1 7/8		5 7/8	1 37/64	5/8	3 35/64	4	1 31/32	4 39/64	3 11/32	2.032	0.748		210-30		1.28
210-31	1 15/16		149	40	16	90	102	50	117	85	51.6	19	M20	210-31		2.82
210-32	2													210-32		